

**THE ALVA
REVIEW
COURIER**

NEWSGRAM

VOLUME 44, NO. 42 • WEDNESDAY, OCTOBER 9, 2024 • 50¢
620 CHOCTAW, ALVA, OKLAHOMA 73717

Woods County
Commissioners choose
architecture firm for
senior citizen center
projects

"More crime is prevented by fear of exposure in the press, than by all the laws man has ever devised" - Joseph Pulitzer



We've got you covered!



INSURANCE CHECKLIST

- ✓ Home Insurance
- ✓ Auto Insurance
- ✓ Life & Health Insurance
- ✓ Farm & Ranch Insurance
- ✓ Commercial Insurance

HALTOM INSURANCE

Farm & Ranch - Home - Auto - Commercial - Life & Health

Alva 580-327-1200

Cherokee 580-596-3423

Fairview 580-227-2575

Proudly serving our clients throughout Oklahoma, Kansas and Texas!

The Newsgram is delivered to Alva, Capron, Hardtner, Kiowa, Hazelton, Medicine Lodge, Burlington, Byron, Amorita, Cherokee, Helena, Goltry, Carmen, Aline, Dacoma, Hopeton, Waynoka, Freedom, Jet, Nash, Cleo Springs & Manchester

Seiling man dies in ATV accident

By Marione Martin

A fatal wreck occurred on Monday, Oct. 7, at 10:30 a.m. in Woodward County. The location was on South County Road 223 and East County Road 57, approximately three miles south and eight miles east of Mutual.

According to the Oklahoma Highway Patrol report, Woodward EMS pronounced James William Cole, 84, of Seiling, dead at the scene with head and internal trunk injuries. Cole was driving a 2016 Polaris Sportsman ATV and pulling a tree limb out when the left tire went off the creek bank, causing the driver to fall off, striking his head.

Lt. Grant Arnold investigated, assisted by Woodward County Sheriff's Office, Woodward County EMS and Seiling EMS.



Youth, parents, educators and alumni across the country will celebrate everything 4-H this week as Oct. 6-12 is proclaimed National 4-H Week. Alfalfa County commissioners (from left, front row) Garret Johnson, Mike Roach and Nate Ross signed the paperwork for the proclamation and heard from each student about the impact the program has had on their lives. 4-H educators with the OSU Extension office Erin Metcalf (far left, back row) and Megan Ferrell (far right), are pictured with students (from left) Aubrey Marrero (reporter), Hannah Hensley (game leader), Stetson Metcalf (treasurer), Kortney Campbell (vice president), Kreed Campbell (secretary) and Kord Campbell (president). Photo by Laneta Schwerdtfeger

THE DRAIN CO.
PLUMBING
580-884-9217
Lic #00120506 Carmen, OK

WHITE FOX
ROOFING & SIDING, LLC.

580-478-2581
whitefoxroofingandsiding.com

Call toll-free 1-800-FED-INFO
to find out about government programs, benefits, and services.

The Alva Review-Courier / Newsgram is published Wednesday by Martin Broadcasting Corp.
620 Choctaw St.
Alva, Oklahoma 73717
Marione Martin, President
Telephone Numbers:
Alva Review-Courier 580-327-2200
Newsgram 580-327-1510
FAX 580-327-2454
www.alvareviewcourier.com
E-Mail: manager@alvareviewcourier.net
news@alvareviewcourier.net
Entire Contents Copyright 2024

Alfalfa County youth to celebrate National 4-H Week Oct. 7-12

By Stacy Sanborn

Six 4-H students and their educators visited the Alfalfa County commissioners Monday morning for the proclamation of National 4-H Week. Kord Campbell, the group's president, read the proclamation and, after, commissioners Garret Johnson, Mike Roach and Nate Ross signed to designate Oct. 6-12 as 4-H Week in Alfalfa County.

Each student introduced themselves and told what 4-H meant to them, resulting in proud smiles from their educators, Megan Ferrell and Erin Metcalf, and the commissioners. After the students left, the three men agreed that Ferrell and Metcalf had an impressive group of students. Ferrell later said that the Alfalfa County 4-H student body had increased again this year and has about 165 students.

Once everyone cleared out, Johnson, Roach and Ross got back to the agenda, first approving a \$1,000 transfer of

funds from the Carmen Responder M&O account 1321-3-8211-2005 to the Carmen Responders Capital Outlay account 1321-3-8211-4110 for electrical, plumbing, and HVAC for their new building. Then they approved another transfer of funds, this time for \$59,000 from the E911 M&O account 1201-2-3600-2005 to the E911 Personal Services account 1201-2-3600-1110 accounts. This transfer was for salaries over the remainder of the fiscal year.

The commissioners approved a couple of more transfers: One was for \$83.33 for EM M&O to EM Personal Services to correct an underestimation from the Sept. 30 meeting, and the other was a \$233 correction for Hwy District 3 account 1102-6-6530-2005 to Hwy District 1 account 1102-6-4100-2005 for warrant no. 349 that should have been a District 3 invoice.

See Youth Page 10

2025 GMC SIERRA HD TRUCKS

2025 GMC Sierra 2500

PRO, Reg cab, 4X4, 6.6L, gas



Starting at **\$59,573**

Sterling Metallic & White avail. (Butler & Bramco beds)

2025 GMC Sierra 2500

PRO, Dbl cab, 4X4, 6.6L, gas



\$54,243 + bed

Chose your bed

LAND O' LAKES ...CALL FOR SPECIAL PRICING

New 2024 GMC SIERRA 1500

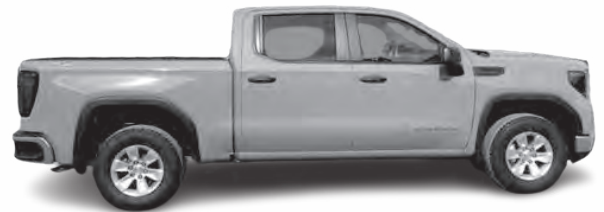
UP TO **\$8,300 OFF**

SLE, SLT & Pro Models

Starting at ~~\$47,230~~

NOW \$46,380

0% AVAILABLE



5.3L & Diesel Models

GREAT SELECTION OF TRUCKS

PRE-OWNED PRE-OWNED

2018 CHEVY 1500



\$24,490

LT, 4WD, 113K MILES, RED

2016 FORD F350



\$21,990

4X4, V8, 6.2L, GAS, NEW TIRES, 114,590 MI

2021 GMC CANYON DENALI



\$40,990

ONLY 5,750 MILES!!! 4WD, SATIN STEEL

2021 JEEP GRAND CHEROKEE



\$39,490

OVERLAND, 4WD, SUNROOF, ONLY 41K MILES!

2023 CHEVY MALIBU IX



\$20,990

SHARP & SPORTY, 38,690 MILES

2018 GMC SIERRA 1500



\$30,990

SLT, LEATHER, 6.2L, 4WD, TONNEAU COVER, BLUE

2022 FORD F250



\$52,400

EXT CAB, DIESEL, LARIAT, LEATHER, 58K MILES

2019 FORD F-150



\$27,990

SHELBY XL, 4WD, 78,800 MILES, BLUE

2019 FORD RANGER XLT



\$29,990

4WD, 55,949 MI, GREY

2024 BUICK ENCORE GX



\$26,699

5 MILES! WHITE & SPORTY!

2023 GMC TERRAIN



\$27,990

SLE ELEVATION, 10,612 MILES, SPORTY WHITE!

2021 BUICK ENVISION



\$29,990

ESSENCE, LEATHER, CINNABAR METALLIC, 34,700 MILES

PRE-OWNED PRE-OWNED PRE-OWNED PRE-OWNED

JENSEN'S

IN FAIRVIEW SINCE 1931



580-227-4455

www.jensensinc.com

Two Oklahoma state questions on ballot in November

By Marione Martin

I was surprised when someone asked me about the state questions on the November ballot. I've been focused on the Woods County sheriff contest and the presidential race and hadn't noticed what else will be on the ballot. I explained that the Oklahoma Press Association sends out information on state questions. Monday my email inbox contained that information.



Instead of writing a column, I'm opting to use this space to publish the OPA information about the two state questions on Oklahoma ballots. It will also be published in the Alva Review-Courier, but the Newsgram circulation is much bigger. Hopefully, you'll find this helpful and informative.

Two Oklahoma State Questions

Two questions will appear on the Nov. 5, 2024, General Election Ballot. Both were referred to a vote of the people by the Oklahoma Legislature.

The questions are reprinted here as they will appear on the ballot followed by a brief summary prepared by the Oklahoma Press Association.

STATE QUESTION 833

Permits creation of public infrastructure districts.

LEGISLATIVE REFERENDUM 376

STATE QUESTION 833

This measure adds a new section, section 9E, to article 10 of the Oklahoma Constitution. Section 9E will permit the creation of public infrastructure districts to provide support, organization, operation, and maintenance of services. To create such a district, proponents for creating the district must file a petition with the municipality. The petition must include the signatures of one hundred percent of all surface property owners falling within the district's proposed boundaries. The municipality possesses the right to impose limitations on the district's powers prior to approving the

district. Once approved, the district will be governed by a board of trustees.

Through the board, the district may issue bonds to pay for all or part of all public improvements implemented by and for the public infrastructure district. The district will be limited to issuing bonds issued for such improvements not exceeding ten (10) mills. For repayment of the bonds, the district, acting through its board of trustees, will levy and assess a special assessment on all property benefiting from the improvements in the district. Section 9E also authorizes the Legislature to enact laws necessary for the implementation of public infrastructure districts.

SHALL THE PROPOSAL BE APPROVED?

___ FOR THE PROPOSAL — YES

___ AGAINST THE PROPOSAL —

NO

SUMMARY: State Question 833 adds a new section to Article 10 of the Oklahoma Constitution. Section 9E will permit the creation of public infrastructure districts to provide support, organization, operation and maintenance of services. The districts could only be formed by petitioning the municipality and requires approval of 100 percent of the surface property owners in the specified area. After approval from the municipality, the districts could then issue bonds to pay for all or part of the public improvements. The districts can impose a property tax not to exceed 10 mills on the real property within the district for repayment of the bonds. The sponsoring municipality can impose limitations of the district's powers. Once it is approved, the district is governed by a board of trustees. Assessments are placed on properties and are in addition to all other levies. The principal author of the legislation in the Oklahoma House of Representatives said the measure would allow improvements to land such as sewer or water or electricity in unserved areas and sees it benefiting areas annexed by municipalities that are underserved by roads or utilities. Petitioners would first have to get permission from that sponsoring municipality to issue bonds and levy the assessment only on properties that benefited from the improvements. Unlike a Tax Increment

Financing District, special districts enabled by SQ 833 continue to collect and remit property taxes for schools, libraries, fire districts and other taxing entities. The revenue generated is on top of existing levies.

STATE QUESTION 834

Clarifies that only U.S. citizens are qualified to vote in Oklahoma elections.

LEGISLATIVE REFERENDUM 376

STATE QUESTION 833

This measure amends Section 1 of Article 3 of the Oklahoma Constitution. It clarifies that only citizens of the United States are qualified to vote in this state.

SHALL THE PROPOSAL BE APPROVED?

___ FOR THE PROPOSAL — YES

___ AGAINST THE PROPOSAL —

NO

SUMMARY: State Question 834, referred to voters by the legislature this past Spring, amends Section 1 of the Oklahoma Constitution to clarify that only United States citizens are qualified to vote in Oklahoma elections. Proponents of the change claim, without citing specific cases, that the U.S. faces an unprecedented threat from non-citizens voting in elections. Opponents claim the vote is unnecessary because Oklahoma law already makes it a felony for non-citizens to register to vote. Proponents say the Constitutional change is needed in case a court challenge prevails that allows non-citizens to cast ballots in state elections.

Six other states have similar measures on this year's General Election Ballot. They are Wisconsin, North Carolina, South Carolina, Iowa, Kentucky and Missouri. Since 2018, North Dakota, Colorado, Alabama, Florida, Ohio and Louisiana have made constitutional changes specifically banning non-citizens from voting.

The U.S. Congress voted in 1996 to ban non-citizen voting in federal elections such as for the U.S. House, Senate and Presidency. However, federal lawmakers did not address state or local elections. Noncitizens in the District of Columbia and some California, Maryland and Vermont municipalities are allowed to vote in some or all local elections.





Your invited to Cherokee Main Street's

OCTOBER STROLL

SHOP LOCAL

FOOD TRUCKS

OCTOBER 12, 2024 ~ 9AM TO 3PM

CHEROKEE VOLUNTEER FIREMAN'S BENEFIT PANCAKE BREAKFAST 8AM TO 10AM

ALFALFA COUNTY HISTORICAL SOCIETY MUSEUM OPEN

HORSE BUGGY RIDES BY JANA OISTER

TRACTOR PULL ~ EAST OF RV PARK ~ KIDS TRACTOR PULL 1PM ADULTS FOLLOW

CRYSTAL CAR SHOW AT CHEROKEE RV PARK

KANOKLA HOSTING VR GAMING AT CITY HALL

STROLLING FOR 4-H- 5K & 1 MILE FUN RUN/8AM START AT CHS SPORTS COMPLEX

VENDORS FROM ALL OVER NW OKLAHOMA WILL BE SET UP FOR SHOPPING

SO MUCH FAMILY FALL FUN, COME CHECK IT OUT IN CHEROKEE!!

AD SPONSORED BY

For more Info contact Schaun Aker
580-596-6111
www.cherokeemainstreet.org

GREAT SALT PLAINS HEALTH CENTER



405 S. Oklahoma Avenue in Cherokee, Oklahoma
We accept patients with and without insurance.

This health center is a Health Center Program grantee under 42 U.S.C. 254b, and a deemed Public Health Service employee under 42 U.S.C. 233(g)-(n).

Alva School Board hears about student achievements

IT director resigns, NexTech hired to finish year.

By Marione Martin

On Monday, Superintendent Jeremy Brashears enjoyed reporting to the Alva Board of Education about recent student achievements. He said the high school softball team won the regional tournament in Alva last week. "Our softball girls out-played their opponents 26-0," he reported. The Ladybugs will play in super regionals this Thursday in Chandler with games at noon and 2 p.m.

"Football improved their record to 4-1," said Brashears. "After their win against Hennessey Thursday, they are currently tied, a three way tie, for first in district." He said three teams have district records of 2-0.

"One Act play presented their production of 'Shipwrecked' at the Mustang Festival. They received best poster, outstanding tech, six of our students were named to the all-star cast, and they received a superior rating," he reported. Alva High School will host the regional speech and debate competition Thursday starting at 12:45 p.m.

Alva Schools have gained ten students since last month. The superintendent said there are 241 students at Washington School, 157 at Longfellow, 150 at Lincoln, 228 at the middle school and 283 at the high school for a total of 1,059.

Brashears reported two resignations this month. Trevor Lohrding, IT

director, is resigning effective Oct. 11. Amy Graybill, a paraprofessional at the middle school, is resigning effective Oct. 16.

School board members present for the meeting were Jane McDermott, Karen Koehn, Kevin Pingelton and Shane Hansen. Paul Barton was absent. Koehn announced that Hansen recently earned his doctorate, and he was offered congratulations.

Later in the meeting, the board approved hiring two paraprofessionals to fill the vacancy from the resignation and the other remaining vacancy. The new paras are Starlet James and Micah Maloney.

Two Contracts Approved

Brashears said he preferred to take some time finding a replacement for the IT director. To fill those responsibilities, he asked the board to approve a contract with NexTech to cover the remaining ten months of the fiscal year. He talked with Brian Hofen of NexTech who was already doing an asset inventory of some tech items like the security cameras. Working with BancCentral, Hofen was directly involved in the installation of door locks and security cameras at the school. When BancCentral closed their tech section, Hofen and others started NexTech.

The ten-month contract with NexTech is \$73,000 for ten months. Brashears

said counting benefits, that's about the same amount that Lohrding was earning as IT director. The board approved the contract with NexTech. Brashears said Adam Swallow will continue working in IT for the schools, and Jacob Gould may help some.

With office copier leases ending, Brashears did a price comparison. He didn't like the contract with the previous supplier, Century Business, which gave them the option to increase lease prices during the contract. He found leasing from SPC Office Products, with several offices including Woodward, was less expensive, and the price won't change during the contract life. He said the cost for eight copiers at current locations and one color copier at the district office is \$25,927 a year. The lease is 44 months which will make the ending date coincide with the end of the fiscal year. School board members approved the new lease.

Gifted and Talented Plan

Middle School Principal Stephanie Marteney is in charge of the gifted and talented program for the Alva Schools. She said the gifted and talented plan has not changed from last year, and the board later approved that plan.

Marteney said the gifted and talented committee is looking at ways to recognize more students as gifted. Nominations are sought from educators, parents, community members and the students themselves. One of the current criteria is taking a nationally standardized test, Otis Lennon, with the top three percent selected. Marteney said the Alva district has five students who met that.

The state says the school district could recognize up to 8 percent of the ADM or 84 students who would add points to the ADM on which state aid is based.

Out with Bus Leasing, In with Bus Purchases

During discussion of the consent agenda items, Brashears told the board about options to the current leasing of route buses. He said the renewal lease cost from Midwest Bus Sales is

See Board Page 8



JEREMY BRASHEARS
Superintendent

327-4823 Superintendent Office
327-3682 High School Phone

The Alva Superintendent News
is a Monthly Presentation of

Marshall

— Funeral Home —

Alva, Oklahoma 580-327-2311





Dean Goll

REAL ESTATE & AUCTION, LLC



NEW - 224 Acres of excellent grassland, 3 ponds with beautiful home or hunting lodge, large shed, cement bunk lines. House has 5 bedrooms, 4 baths, large living area with fireplace, kitchen, utility and mudroom, 3-car garage, 2,160 sq. ft.; Also has a large 7,000 sq. ft. shed with lean-to. This property lies next to the Great Salt Plains Wildlife Reserve, excellent goose, sandhill crane, and duck hunting. Don't miss your chance to own this beautiful property. The house is move-in ready with most furnishings staying. House location is 6937 Dewy Road, Jet, Okla. SW $\frac{1}{4}$ S $\frac{1}{2}$ SE $\frac{1}{4}$, NW $\frac{1}{4}$ 31-26-9, W.I.M., Alfalfa County, Okla.
PRICE: \$1,035,000.00

NEW - 155 Acres - Excellent stock farm - This tract consists of 142 Acres of cropland (primarily Grant silt loam and Reinach sandy loam soils). Has new 5-wire fences, steel corrals, and bunk line. Borders State Hwy 64 West of Jet, Okla. NW $\frac{1}{4}$ - 10-25-10, W.I.M., Alfalfa County, Okla. **PRICE: \$350,000.00**

NEW - 160 Acres - Excellent Diversified Farm - This tract consists of 160 Acres, of which 105 Acres is good cropland (primarily Yahola fine sandy loam and Grant silt loam soils), and the balance being 55 Acres of good grassland, trees, and spring creek, which also runs through the property. Improvements include a 30'x40' shed with 15' lean-to. New steel corrals and a water well with tank and solar panel. NW $\frac{1}{4}$ - 25-29-14, W.I.M., Woods County, Okla. **PRICE: \$375,000.00**

NEW - 2 - 80 Acre tracts - A HUNTING PARADISE! Tall grass, trees and tree lines, brush, plum thickets - deer everywhere! S $\frac{1}{2}$ SW $\frac{1}{4}$ - 12-19-23, W.I.M. and N $\frac{1}{2}$ NW $\frac{1}{4}$ - 13-19-23, W.I.M., Ellis County, Okla. Location of property: From Arnett, go 8.5 miles east on Hwy 60 to County Road 190, then go 1 mile south to a hunting paradise. **PRICE: \$160,000.00 per 80 Acre tract**

NEW - 80 Acres - Great Home-Site Potential - Potential Hunting!
Excellent grassland and scattered trees throughout, which makes for excellent hunting. Good live-wire fences, steel corrals, and a solar well for water. From Waynoka, OK, go 2 miles north on Highway 14 to Comanche Road, then 1/2 mile east. E $\frac{1}{2}$ NW $\frac{1}{4}$ 25-25-16, W.I.M., Woods County, Okla. **PRICE: \$208,000.00**

NEW - 160 Acres - Excellent Cropland - This tract consists of 160 Acres of excellent cropland (primarily Pond Creek silt loam, Devol silt loam, and Grant silt loam soils). This tract has a new 5-wire fence and a Ritchie automatic waterer. SE $\frac{1}{4}$ 31-28-12, W.I.M., Alfalfa County, Okla. **PRICE: \$475,000.00**

NEW - 560 Acres - "A Hunting Paradise" Tall grass, brush, trees, plum thickets, 1/2 mile from Salt Fork River. It also has a good water well, electricity, an older barn, and 5-wire fences. Several big bucks have been taken off this property. This tract also has 85 Acres of good cropland. W $\frac{1}{2}$, NE $\frac{1}{4}$, N $\frac{1}{2}$, SE $\frac{1}{4}$ - 32-29-14, W.I.M., Woods County, Okla. **PRICE: \$1,200,000.00**

NEW: 355 Acres - Excellent Hunting & Grazing with Live Water. This tract consists of 355 Acres, which 127 Acres is improved grass and the balance being 228 Acres of good native grassland and cropland. This tract has good 5-wire fences and is watered by a solar well and a live-water creek. This farm has excellent hunting with the live water, trees, and canyons. SE $\frac{1}{4}$, S $\frac{1}{2}$ NE $\frac{1}{4}$ - 22-27-16, and the W $\frac{1}{2}$ SW $\frac{1}{4}$, SW $\frac{1}{4}$ NW $\frac{1}{4}$ - 23-27-16, W.I.M., Woods County, Okla.

NEW: 870 Acres - Excellent Hunting, Grazing, Live Water. This tract consists of 870 Acres, which 204 Acres is improved grass, with the balance being 666 Acres of good native grassland. This tract has new 5-wire fences and is watered by ponds, windmills, and two live-water creeks, one of which is Red Horse Creek. The hunting potential is unbelievable with the beautiful canyons and the live water running down through them. Located in Sections 2, 10 & 11 - 27-17W.I.M. Woods County Okla. **PRICE: \$1,400,000.00**

NEW - 80 Acres - Excellent Cropland - This tract consists of 80 Acres of cropland (all Grant silt loam soils), has rural water, and lays 4 miles west of Alva on Hwy 64. E $\frac{1}{2}$ NE $\frac{1}{4}$ - 25-27-15, W.I.M., Woods County, Okla. **PRICE: \$240,000.00**

NEW - 280 Acres - Excellent Stock Farm This tract consists of 280 Acres, of which 186 Acres is good cropland (primarily Bethany silt loam, Yahola fine sandy loam, and Grant silt loam soils), and the balance being 94 Acres of grass and waterway, with 33 Acres of that being Bermuda grass. This farm would make an excellent stocker or cow-calf operation. NW $\frac{1}{4}$ & W $\frac{1}{2}$ W $\frac{1}{2}$ NE $\frac{1}{4}$ - 22-28-13, W.I.M., and E $\frac{1}{2}$ NE $\frac{1}{4}$ - 21-28-13, W.I.M., Woods County, Okla. **PRICE: \$675,000.00**

NEW - 400 Acres - "A Hunting Paradise" - Tall grass, trees, cropland, good fences - 1/4 mile from Salt Fork River. This tract consists of 400 Acres of which 151 Acres is good cropland and the balance being 249 Acres of excellent grass. "This is trophy deer country." Don't miss your chance to have a hunting place to call your own. SE $\frac{1}{4}$ - 24-28-15 & SW $\frac{1}{4}$ & W $\frac{1}{2}$ SE $\frac{1}{4}$ - 19-28-14, W.I.M. Woods County, Okla. **PRICE: \$775,000.00**

NEW - 154 Acres - NW $\frac{1}{4}$ - 29-27-13, Woods County, Okla. This tract consists of 154 Acres of good cropland, the balance being 22 Acres of trees, grass, and waterways. There is excellent building potential. Just one mile east of Alva. **PRICE: \$550,000.00**

NEW - 315 Acres of which 208 Acres is excellent cropland, and the balance being 107 Acres of excellent grassland. Improvements include a 1,200 sq. ft. home, 32' x 60' shop w/ 16' lean-to, steel corrals, N $\frac{1}{2}$ - 29-29-12, W.I.M., Alfalfa County, OKLA. **PRICE: \$1,050,000.00**

NEW - 160 Acres - Blue Ribbon Farm - Excellent cropland (Pond Creek silt loam soils), rural water. NE $\frac{1}{4}$ - 15-28-11, W.I.M., Alfalfa County, Okla. **PRICE: \$550,000.00**



208 Duncan Drive - Cherokee, OK
3BR, Bath, Kitchen, LR, Garage, Deck, Storage Shed
All new: HVAC, Oven/Stove, Carpet/Paint -1104 sq ft
Great Neighborhood - Perfect Starter Home or
Rental-Ready Investment Property (quick payback).
Priced: \$67,500 Motivated Sellers!

RESIDENTIAL

ALVA DEVELOPMENT POTENTIAL 50 Acres M/L NW side of the City

Space for multiple home sites, Recreational pond site, abundant timber, productive farm or pasture acres. Call to see beautiful tract to drive by and dream what could be.
NE $\frac{1}{4}$, 22-27N-14W.
PRICE: \$260,000



NEW LISTING: 1320 KAY AVE CHEROKEE, OK

Family Home with Extra Living Space. 3BR, 2 Bath, Kitchen, DR, FR, LR, UR, Patio, 2-Fireplace, Lg. Basement, Lg. Garage, Fenced Yard, Storage shed, Appliances incl.
New: Windows (Anderson), Flooring, Sewer, Leaf Filter Gutter Covers. 1,813 sf ground level, 940 sf basement, 480 sf garage.
Priced to sell: \$199,000.

COUNTRY HOME ON 20 ACRES -BURLINGTON SCHOOL DISTRICT

- Owner Motivated - Assumable Loan for qualified Buyer!



Enjoy 2,700 sq ft. of Living Area. Master BR (ground level) and 3 BR (upstairs); Large Bath, Beautiful open Kitchen (Incl. appl.), DR, LR, FR (w/ wood-burning stove), Util. Rm, Storm cellar, Rural Water, Gas & Electric. 2-water wells (1 w/ solar pump). Abundant storage. Nice Detached 2-Vehicle Garage and Shop. Features a pond area for recreation w/ trees, fishing, wildlife, deer, quail, & turkey. Location: From Burlington, Okla. Go 1 mile west to County Road 560, then 1.5 miles South to the property. Address: 32312 County Road 560, Burlington, OK. 73722. -

REDUCED PRICE: \$335,000.00



Licensed in Okla. and KS
Dean 327-7246 • Todd 580-747-7825 • Steve 580-445-5145
806 Okla. Blvd. • Alva, OK 73717 • 580-327-8217
★ www.deangollauction.com ★

Carl's Capitol Comments

Water management study indicates deeper drought

By Rep. Carl Newton

Last week, I attended an interim study on Oklahoma's water usage, monitoring and oversight, hosted by Sen. Brent Howard.



It was a five-hour study, but well worth the time as we heard from various stakeholders. These included those who use water to irrigate their farm and ranch land, commercial users such as those from the oil and gas industry, as well as experts from the Oklahoma Water Resources Board (OWRB) and others who've long studied water use and have suggestions for better ways to conserve this precious resource.

It was a packed house, and the study proved very informative.

We first heard from Duane Smith, the past executive director of OWRB and now the executive director of the Oka' Institute at East Central University. He discussed the state's current drought conditions. When contrasted by the surpluses we had in the 1980s and 90s,

a relatively wet period, it now looks as if we're getting into a deeper drought.

Smith stressed the need for updated policies that address the state's growing water demands, improved monitoring systems, and enhanced oversight mechanisms to protect Oklahoma's water supply in the face of increasing challenges.

Julie Cunningham, the executive director of OWRB, also spoke. One of the things brought up was the Tamarix ramosissima, or the salt cedar, that can pull up to 200 gallons of water a day from the soil.

When we're looking at water planning and water use, we also need to look at invasive species, such as this, to see if we have land that needs to be cleared.

OWRB also showed the increased number of water wells over the last 50 to 70 years, which are putting a greater demand on our state's underground aquifers.

We heard from several irrigators who talked about how they are trying to be good stewards of the water they use and conserve this resource for future generations. I would agree the majority

of irrigators are good stewards. It's the 5% of irresponsible users that need better monitoring.

Oil and gas industry experts talked about how they are trying to use non-drinkable water and how they try to recycle as much as they can – not just use and dispose.

Municipal officials also spoke about their needs and patterns of water usage.

Dr. Todd Halihan, with the Oklahoma Well Drillers Association, spoke about how we need to continue to look at how we use water and how we store it. Instead of leaving it on the surface where it evaporates, he said we need to focus on storing water underground and better replacing what we use.

This was a good study. I agree with Sen. Howard that we need to conserve our water as much as possible so future Oklahomans will be as prosperous or even more so than we have been to date.

As always, if I can help in any way, please do not hesitate to contact me. You may reach me by email at carl.newton@okhouse.gov, or phone me at 405-557-7339. God bless you and the State of Oklahoma.

From Page 6 Borad

\$570,000, up \$50,000 from last year, for five buses. He said a new bus can be purchased for \$131,000.

He provided a chart showing three different options. The first was to continue with the present lease. Option two was the purchase of two new and three used buses. Option three was purchasing five new buses. Brashears recommended option 2. With this option, the school would break even after one year. After the second year, he recommended the school replace the oldest bus with a new one and continue to buy one new bus a year.

Pingelton asked about the difference in warranties with leasing versus buying. Brashears said there is no difference since the school has been responsible for

repairs under the lease agreement.

Hansen asked about insurance costs, and Brashears said they are the same.

McDermott asked about mileage limits on leased buses. Brashears said the lease limits are just a little over what the school puts on them in a year. In the purchase option, there would be no limits so the school might use a route bus to take students to an extra-curricular event instead of using several smaller vehicles.

School board members thanked Brashears for his research and agreed that option two, the purchase of two new and three used buses, was best.

Financial Information

Looking at the investment ledger listing school funds currently in interest-bearing accounts, Brashears listed the

amount in each of the school funds with a total of \$9.271 million invested. The county treasurer handles the investments for the school.

The general fund had a short list of purchase orders. The school spent \$13,089.16 with R & T Diesel Repair with most of that going toward the annual bus inspections. The school pays for ACT testing for juniors, and that cost is \$4,130.

Brashears was very enthusiastic about hiring Bill Cordes to speak to students for \$12,000. He spoke to high school and middle school students. Koehn said she asked a few students about hearing Cordes speak, and they

See Borad Page 10



**BEST TIME TO
SELL LAND IS NOW!**
QUALIFIED BUYERS ARE WAITING

CIMARRON
LAND GROUP

TYSON BARNES

*Land Specialist - Local Rancher
Serving Oklahoma*



**“IN 2023 I PERSONALLY SOLD OVER
\$44 MILLION WORTH OF PROPERTIES**

**MY SALES AND REPUTATION
SPEAK FOR THEMSELVES.**

**TO KNOW IT IS TO LIVE IT.
I LIVE IT EVERYDAY”.**

580-430-8349

Tyson@cimarronlandgroup.com

Cimarronlandgroup.com

CIMARRON LAND GROUP IS LICENSED IN OK

From Page 8 Board

said he was really good.

The building fund listed a purchase order for \$2,500 to Alfalfa Electric Cooperative to install a new air conditioner compressor at Lincoln Elementary.

Extra Duty, Activity Account

There were a couple of changes in the extra duty assignments. Mary Tyree didn't want to handle the concession stand all year so Cassidy Dietz agreed to take her place. Tyree will be paid \$800 for covering JV football and softball. Dietz will receive \$1200 for the remainder.

Tyree also asked for help with esports sponsorship. Coach J.B. Kimberlin agreed to help. Each of them will take one semester with each receiving \$750 for this extra duty.

In the activities accounts, Brashears said about \$20,000 in receipts had come in for athletics, FFA took in \$81,000 for their blue and gold sale, and Lincoln School's math-a-thon raise \$16,500.

Board members approved a fundraiser request from Washington School. Principal Madison Williams explained that in the past, the elementary schools went together to hold the color run. Interest has fallen off, and the other schools don't want to participate. So this year, Washington is holding a Monster

Mash & Dash on Oct. 28. In addition to the run/walk, there will be family fun activities. Students will create a piece of art, and parents will be able to purchase this art on various items through a website. The fundraiser provides money for field trips and student incentives.

Budget

Brashears distributed a copy of the budget to board members. He said the budget will be posted on the school website sometime this week as the first item under a finance section. Copies will also be available at each school site.

He said we continue to see increases in the cost of goods and services with an approximate three percent inflation rate. The dockworker strike has been put off to January with a contract extension, but a strike could bring higher prices.

Revenue last year was lower than expected. Gross production tax collections were 48 percent of the estimated amount for last year. He said tax protests including oil and gas protests affect the school revenue. Targa received a 54 percent decrease in valuation.

In 2017, the school district valuation (for ad valorem taxes) was \$157.7 million. Presently it is \$135.8 million. Federal aid in the form of ESSER funds

has ended.

Brashears said the actual working budget for this year is \$13,054,522 which is pretty flat.

Looking at enrollment, he said last year it was 1,034 and two years ago it was 1,040. He believes the current enrollment of 1,059 is the highest in 20 years.

The board approved the budget as presented.

Other Business

A resolution to the Oklahoma State Department of Education of Alva's intent to use hours rather than days for the school year was approved. Brashears said the current schedule includes enough hours to allow for some snow days.

A \$10,000 anonymous donation to the Alva High School speech account was approved.

An out of state travel request for the AHS Choir to travel to Branson, Missouri, on March 16-20, 2025, was approved. They will compete in a contest there.

The meeting closed with an executive session for the ongoing evaluation of the superintendent.

A video of the meeting may be viewed at www.AlvaReviewCourier.com by clicking on Videos.

From Page 2 Youth

Next, the commissioners opened quotes for the electrical portion of the new Carmen Responders building. One was from Enid Electric for \$28,500, another from KC Electric for \$48,924, and the last from Brighter Side Electric for \$29,900. The commissioners chose Enid Electric.

Lastly, the three men signed resolutions for new certificates of

deposit with ACB Bank. The resolution allows the county treasurer to deposit \$1,000,000 into a 12-month CD, and \$750,000 in another 12-month CD. The money is from the EMS-ST Fund (1304).

Alcoholic beverage tax: Aline \$632.88; Amorita \$143.16; Burlington \$467.13; Byron \$139.38; Carmen \$1,356.18; Cherokee \$5,560.35; Goltry \$945.56; Helena \$5,790.14; Jet \$742.13; Lambert

\$18.84. **Total: \$15,795.75.**

Appropriations:

- 911 Phone Fees (1201) \$14,133.21
- America Rescue Plan Act (1566) \$533.69
- Assessor Revolving Fee (1204) \$145.15
- CBRI (1103) \$31,032.43
- County Clerk Lien Fee (1208) \$353.48
- County Clerk RM&P (1209) \$1,350.70
- Court Clerk RM&P (7210) \$239.50
- Emergency Medical Service (1304) \$73,359.05
- Enhanced 911-ST (1332) \$16,560.67
- Fair Improvement - ST (1310) \$9,542.19
- General Govt - ST (1311) \$21,492.63
- Highway (1102) \$415,797.77
- Highway ST (1313) \$24,416.37
- Rural Fire (1321) \$22,940.69
- Sheriff Forfeiture (1225) \$38.46
- Sheriff - ST (1319) \$11,868.48
- Sheriff Service Fee (1226) \$2,787.77
- Treasurer Mortgage Cert (1230) \$75

Burlington C-Store Now Hiring



**OKLAHOMA
KANSAS
COOPERATIVES**
602 Main St., Burlington, OK

Contact 580-431-2211
to apply.



PRESORTED STANDARD U.S. POSTAGE PAID PERMIT NO. 111 AMARILLO, TX ECRWSS DATED MATERIAL POSTAL CUSTOMER



JUMBO CHICKEN DRUMSTICKS
sold in 5 lb. bag
79¢ lb.



FRESH GROUND BEEF
73% lean
sold in 10 lb. tube
small pack \$3.49/lb.

\$2.99 lb.



\$3.99 lb.
BEEF BOTTOM ROUND ROAST
family pack
single pack \$4.99/lb.



CANTALOUPE
juicy

2/\$5 FOR

RED OR GOLD POTATOES
3 lb. bag



\$1.99 ea.

SEEDLESS GRAPES
red or green



\$1.99 lb.

STORE SPECIALS



2/\$5
CRYSTAL FARMS SHREDDED OR CHUNK CHEESE
assorted, 5.5-8 oz.



2/\$6
BLUE RIBBON CLASSICS ICE CREAM
assorted, 48 oz.



98¢
FOOD CLUB VEGETABLES
assorted, 12 oz.

MALT O MEAL CEREAL
select varieties
25-30 oz.

\$3.98



2/\$3
CRAY'N FLAVOR SALTINE OR OYSTER CRACKERS
assorted, 12-16 oz.



4/\$5
AMERICAN BEAUTY PASTA OR HUNT'S PASTA SAUCE
assorted, 12-16 oz. pasta or 24 oz. sauce

REWARDS Digital Deals



CAMPBELL'S CHUNKY SOUP
select varieties
18.6-18.8 oz.

DIGITAL COUPON USE 1X

FREE

With \$10.00 Purchase
With Digital Coupon



DIGITAL COUPON USE 1X

PILLSBURY GRAND! BISCUITS
assorted, 16.3 oz.

2/6 Sale Price
-1.00 Digital Coupon

2/\$5



DIGITAL COUPON USE 1X

MARIE CALLENDER'S BOWLS
assorted, 10.5-14.4 oz.

2.98 Sale Price
-50¢ Digital Coupon

\$2.48



MOTT'S APPLE JUICE
assorted, 64 oz.

DIGITAL COUPON USE 1X

3.98 Sale Price
-65¢ Digital Coupon

\$3.33

DOWNLOAD THE APP TO GET THIS WEEK'S DEAL!

- REWARDS POINTS
- DIGITAL WEEKLY AD
- DIGITAL COUPONS
- SHOPPING LISTS

Scan to download app.



DAILY SPECIALS

Wed Oct 9- Meatloaf
Thurs Oct 10- Rubeen
Fri Oct 11- Fish

Mon Oct 14- Frito Chili Pie
Tues Oct 15- Ham & Beans
Wed Oct 16- Goulash

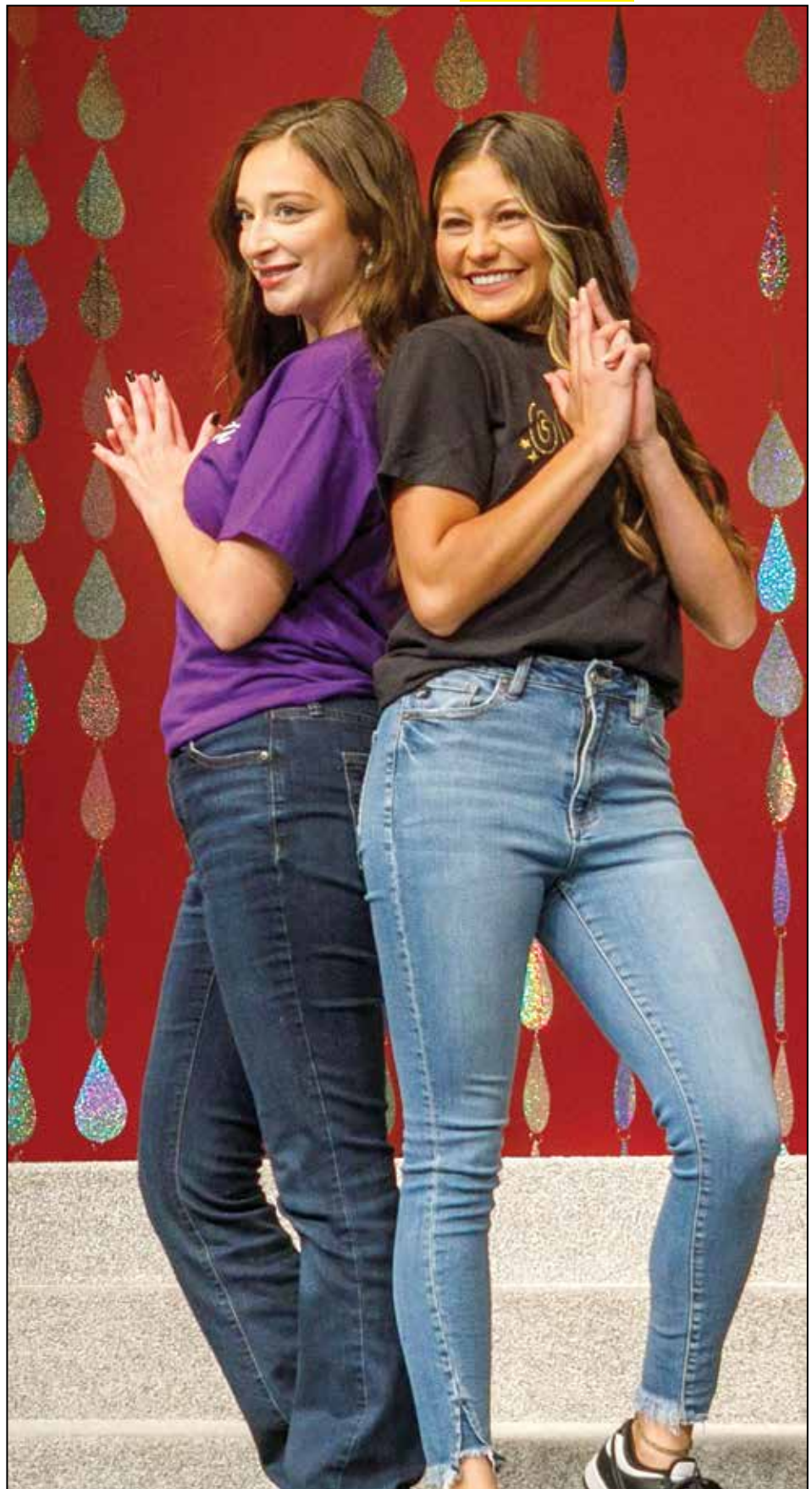
Prices Effective: October 9-15, 2024



Miss Cherokee Kinsy Roberts keeps her eye on the judges as she twirls on the Miss Cinderella stage. Photo by Desiree Morehead



Miss Ashland Biannca Cenicerros stops and poses for the judges during the Miss Cinderella Pageant. Photo by Desiree Morehead



Miss Burlington Hailey McCullough and Miss Alva Lyndee Fraire show off their school spirit during the opening of the Miss Cinderella Pageant Friday night. Photo by Desiree Morehead

Jan's Collectible's
 580-829-3062
 Specializing in Estate Liquidations,
 Ebay Sales and Buying Estates.



Brad Boeckman, President First National Bank in Okeene,
Melissa Harzman, President Alva State Bank & Trust Company

Alva State Bank & Trust Company Merges with First National Bank in Okeene

On October 15th, 2024, First National Bank in Okeene will Merge with Alva State Bank & Trust Company. Both banks are held under Grace Investment Company, a Bank Holding company. The banks will maintain the same ownership and control which is majority held by the Wisdom Family.

Alva State Bank started as one location in Alva then expanded over the years to 5 locations in 4 counties and 2 states. Located in Alva and Freedom in Woods County, Burlington in Alfalfa County, Enid in Garfield County and Kiowa in Barber County, Kansas. The completion of the merger of First National Bank will add an additional location in Okeene, Blaine County, Oklahoma.

The Wisdom Family has been in the banking business for almost 100 years. CC Wisdom purchased First National Bank in Okeene in 1925. CC's son, CW Wisdom, after taking over for his father arranged the purchase of the Alva State Bank from the Mason family in 1957. To this day both banks are still owned by the Wisdom Family and maintain an active role in managing the banks.

In 1991 Alva State Bank purchased the deposits of the failed Alva Savings and Loan, followed by the purchase of the Chisholm Federal Savings and Loan Association in Enid in 1992. In 1995 The bank opened the Burlington branch in Alfalfa County. In 2000, Grace Investment Company, Inc was established as a bank holding company to control ownership of First National Bank in Okeene and Alva State Bank. In 2013 Grace Investment purchased the First State Bank in Kiowa, KS, operating as a stand-alone bank and later merging the bank as a branch into Alva State Bank in 2018. In 2014 The Freedom State Bank was acquired from the FDIC.

CW Wisdom served as President and Chairman of the Board for Alva State Bank until his death in 1993. Following his death, his wife, Grace Wisdom, became Chairman of the Board. She was succeeded in 2008 by their daughter, Dr. Peggy Wisdom, who established the Wisdom Family Foundation to support education, agriculture, art and health care activities in Oklahoma and the Grace Investment Co. Employee Stock Ownership Plan. Dr. Wisdom has continued to remain the Chairman and CEO of Alva State Bank as well as the Chairman of the Board of First National Bank. CW and Grace Wisdom's other two daughters also held roles in the banks. The late Cindy Gingrich worked many years in both First National Bank and Alva State Bank as the controller and managing the banks investment portfolios, while Dianne Sue Wisdom, an attorney, assisted CW Wisdom with legal matters for the banks. The legacy of the Wisdom Family has run strong through the years in the communities it has proudly served for both Alva State Bank and First National Bank. Four generations of the Wisdom Family have been involved in the daily operations and management of the banks, as CW Wisdom's two grandsons, Chad McManus and Bryant Gingrich also currently hold leadership roles within the banks and his granddaughter, Kelsey Gingrich Zarembo serves as a Director on the Board at First National.

The Wisdom Family history in banking has been built on strong values and principles, grounded in integrity, commitment, relationships, and community responsibility. Both banks have a strong capital base and sound management. Over the years Alva State Bank has strived to provide growth for our customers, communities and employees while balancing customer and community needs, regulatory requirements, and shareholder value.

The relationships customers, employees and communities have with Alva State Bank is equally important to our leadership. Our employees believe in what they do, which has resulted in long-term employees with the experience to manage growth. This has provided opportunities for younger employees to grow throughout our organization as well as make an impact in our communities through the support of local events and organizations. Customers, employees, and communities have helped build what Alva State Bank is today and has allowed Alva State Bank and the Wisdom Family Foundation to give back to the communities through strong support in areas such as agriculture, health care and arts education.

Melissa Harzman will continue in her role as President of Alva State Bank & Trust Company. While Brad Boeckman, the current President of First National Bank in Okeene will continue to provide a valuable role at Alva State Bank as Executive Vice President. This leadership team has a combined 60 years of banking experience who are well prepared to lead the Bank into the future. The merger of our banks provides a more efficient way to combine employee talent and resources while expanding products and services offered, as well as an additional branch location. With the completion of the merger, effective October 15th, Alva State Bank's total assets will be \$590 million, with regulatory capital of \$90 million. As a community bank, we value our customer relationships and understand the importance of community support. This merger will serve to enhance our focus on our relationships with our customers and the respective communities served by all our locations.

Alva State Bank,

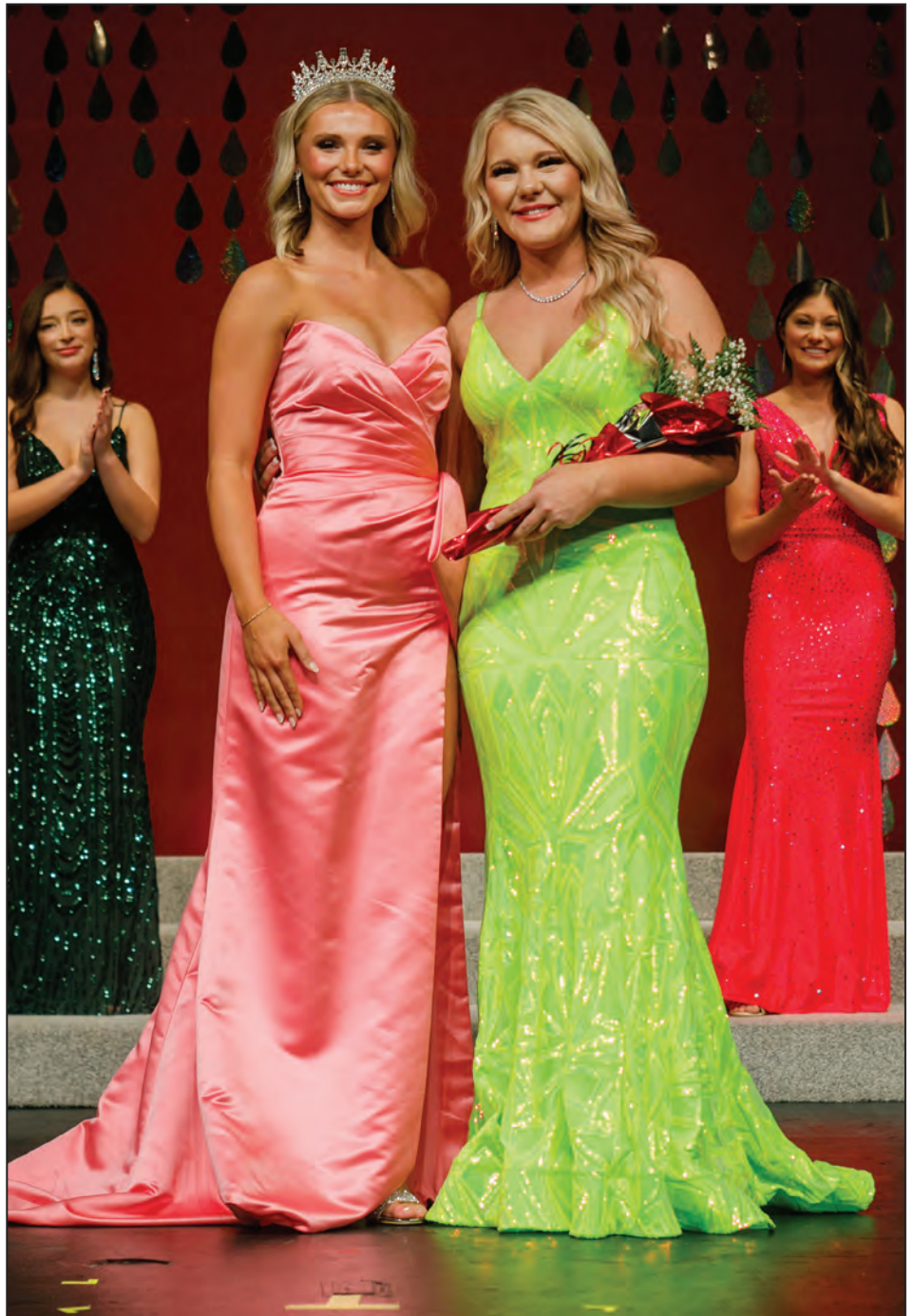
"We plant roots where others have branches."



Miss Buffalo Bridgette Hoffman looks back at the judges as she glides across the Miss Cinderella stage Friday night. Photo by Desiree Morehead



Miss Mooreland Neely Norman performs a vocal solo for her talent, singing "Make the World Go Away" by Elvis Presley. Norman was named one of the Top 5 talents and placed third runner-up in the competition. Photo by Desiree Morehead



Miss Waynoka Marlie Pitts was in the Top 5 for talent and went on to be fourth runner-up during the Miss Cinderella Pageant. Photo by Desiree Morehead



"Helping Hands Across Northwest Oklahoma"



620 Flynn Street - Alva, Oklahoma 73717
 PH: (580) 327-2900 - FAX: (580) 327-1337
 www.northwestfamily.net

If you are 18 years old or younger and not living with your parents due to being homeless, runaway, or at risk for one of these conditions please come by or call Northwest Family Services at 580-327-2900. We are located at 620 Flynn Street in Alva. We have information that may be helpful to you. There is no charge for our services.

REAL ESTATE AUCTION

BUDDY MURRELL REVOCABLE TRUST

ABSOLUTE AUCTION

(One Money Buys House & Contents)

SATURDAY October 26, 2024

SALE LOCATION: 1103 S. Grand Ave., Cherokee, OK

SALE STARTS AT: 10:00 a.m.



LEGAL: Lots One (1) and Two (2), Block Four (4), Gilmore Addition to the City of Cherokee, Alfalfa County Oklahoma. Also known as 1103 S Grand. This is a 1 1/2 story home, with 4 bedrooms, and 2 bath. It has 2093 Sq. Ft. (according to the Alfalfa County Assessor). The home was built in 1925, it has central heat and air and a 1183 Sq. Ft. unfinished basement. The house was once an historical home, and sells in as-is condition!

TERMS: 10% down day of sale, balance due at closing. Abstract will be brought up to date by sale day, and will be ready to go to your attorney.

CLOSING DATE: On or before November 16, 2024

POSSESSION: AT CLOSING

MINERALS: Producing minerals sells with the house.



2005 Chevrolet Impala, with less than 100,000 miles. A slick car that would work for a school car or a work car. *(Vehicle Sells Separately)*

NOTE: Here is a great opportunity to own one of the historic homes in Cherokee, Ok. This house was built in 1925, it has 4 bedroom, and 2 baths it has central heat and air. A 2- story home with an unfinished basement. The house sits on a big corner lot, and could be a dream home again. **AND AS AN ADDED BONUS!! THE HOUSE SELLS WITH ALL OF THE CONTENTS INCLUDED! FURNITURE HOUSEHOLD EVERYTHING IN THE HOUSE STAYS WITH THE HOUSE!!** What an opportunity! For more information Contact: Murrow Auction LLC at 580-327-1998 or 580-430-1654

All announcements day of sale take precedence over printed matter

SALE STAFF

Charles Murrow – Broker/Owner
580-327-1998

George Cole – Broker/Associate
580-430-5734

For more information & other auctions check out the website at www.murrowrealestateandauction.com

MURROW AUCTION

Murrow Real Estate & Auction • 212 Oklahoma Blvd. • Alva, OK • 580-327-1998 or 580-430-1654
Murrow Real Estate and Auction – licensed in Oklahoma

2017 BUICK ENCORE



AWD, Preferred, Cloth, PW&PD (T57602)

SALE PRICE \$13,875

2020 GMC ACADIA



AWD, AT4, Local One Owner, Leather, HS, (T58611)

SALE PRICE \$25,995

2021 GMC YUKON



Denali, 4WD, 6.2L 8cyl, Sunroof, Safety Features, Entertainment, (T58652)

SALE PRICE \$59,995

NEW 2024 GMC Yukon XL



MSRP \$82,350

AT4 Package, 4WD, Leather, H&C Seats, Auto Running Boards, Safety Features, (T5864)

SALE PRICE \$81,350

2015 FORD EDGE



AWD, Titanium, Leather, HS, Sunroof, 94k Miles, (T58351)

SALE PRICE \$14,995

2021 JEEP GRAND CHEROKEE



LIMITED, 4WD, LEATHER, 1 LOCAL OWNER, 45K MILES, (U679)

SALE PRICE \$34,995

CROFT COUNTRY
GMC



401 E. OKLA BLVD
ALVA, OK 73717

1-800-475-8033

MON-FRI 8AM-6PM
SAT 9AM-12PM

2015 CHEVY SUBURBAN



LTZ, 4WD, Leather, H&C Seats, Safety Features, Bucket Seats, (T57821)

SALE PRICE \$19,475

2018 GMC YUKON



SLT, 4WD, Leather, H&C Seats, Safety Features, Sunroof, DVD, (T57881)

SALE PRICE \$29,875

2023 GMC YUKON



SLT, 4WD, Leather, TVs, 5.3L 8cyl, Bucket Seats, (T58911)

SALE PRICE \$58,995

**VIEW EVEN MORE SELECTIONS AT
CROFTCHEVROLET.COM**

2021 GMC 1500



Denali, 4WD, Leather, H&C Seats,
6.2L 8cyl, 39k Miles, (T59011)

SALE PRICE
\$49,995

NEW 2024 GMC 3500



MSRP
\$57,313

Pro Package, 4WD, 6.6L 8cyl GAS, Cloth
Interior, SRW, Bed Delete, (T5796)

2019 FORD F-350



XL, 4WD, REG CAB, DRW, CAKE BOX,
ARM BED, PW&PD, (U675)

SALE PRICE **\$39,995**

CROFT COUNTRY



401 E. OKLA BLVD
ALVA, OK 73717



MON-FRI 8AM-6PM
SAT 9AM-12PM

1-800-475-8033

2010 CHEVY 3500



DRW, 4WD, Deweze Arm Bed,
Ext Cab, LT, (T57771)

SALE PRICE **\$15,995**

2015 CHEVY 3500



SALE PRICE
\$32,995

4WD, LT, Black Cloth, Diesel,
GG, PW&PD, (T57531)

2018 GMC 1500



SALE PRICE
\$26,995

SLT, 4WD, Leather, H&C Seats, Z71, BOSE,
SAFETY FEATURES, (T58582)

2018 RAM 2500



SLT, 4WD, 6.7L 6cyl Diesel, Black Cloth
Interior, PW&PD, (T58181)

SALE PRICE
\$49,995

2010 CHEVY 3500



LT, 4WD, 6.0L 8cyl, Crew Cab,
Spike Bed, SRW, (T58161)

SALE PRICE
\$24,995

VIEW EVEN MORE SELECTIONS AT CROFTCHEVROLET.COM



Andersons celebrate 50th anniversary

Richard and Kandy (Koehn) Anderson were married October 4, 1974, in Lexington, Nebraska.

Their journey began when they met at a haunted house as teenagers in high school. They made Alva, Oklahoma, their home and raised two sons, Ryan and Josh.

Richard is retired and enjoys working in his yard. Kandy works for the Alva Public Schools and likes to spend time cooking and crafting.

The Andersons plan to take a family trip in May 2025 to celebrate their anniversary.

If you see them around town, please wish them a happy 50th wedding anniversary!

Happy Anniversary! Love, Ryan, Kristen, Kennedy, Bentley, Josh and Kim.

ACTION ADS

Alva Review-Courier
620 Choctaw, Alva
580-327-2200



Bakers celebrate 61st wedding anniversary

Mary Jo and Bob Baker were married in St. Cloud, Minnesota, on October 12, 1963, and moved to Alva, Oklahoma, in April 1980 to make their home.

Bob worked for Panhandle Eastern

while Mary Jo was a homemaker.

Their family members include Dan Baker, retired anesthesiologist; Sue and Marcus Hamman and two children, Andrew and Taylor; Mark and Dena Baker and twins, Braden and Brixon; Cory and Lisa Baker and three boys, Jake, AJ and Boston.

Family will celebrate on October 12, 2024, at their home.

Your New Best Friend...
Log on to
www.pueblo.gsa.gov,
and click on the FREE
Consumer Action Website.

THANK YOU!!!!

Thank you to everyone who sold and purchased NWOSU homecoming buttons and to those merchants who provided incentives to be used with these buttons! This is a fabulous community, and the support you invest in OUR university's homecoming is heartwarming!

You continue to inspire me & restate my favorite saying, *"Lucky me...I live in Alva, OK!"*

Karen Koehn, NWOSU Homecoming Button Chairman

HUNTING COUNTRY REAL ESTATE LLC

PRIVATE SALES & AUCTION SERVICES



HuntingCountry.Net



Hc
RANCH
REAL ESTATE



USCropland.com



Acres	County/State	Description	Price	Status
1000	Woods Co, OK	Hunting & Grazing	call for price	NEW
146	Alfalfa Co, OK	Hunting, Sandy Creek, Grazing	call for price	NEW
155	Alfalfa Co, OK	Hunting, 1/2mile from OK/KS State Line	call for price	NEW
320	Roger Mills Co, OK	Spring Fed POND, Grazing, Hunting	\$576,000	NEW
318	Roger Mills Co, OK	Grazing, Creek, Corrals, Hunting	\$540,600	NEW
76	McCurtain Co, OK	Glover River in McCurtain County, OK	\$1,500,000	NEW
300	McCurtain Co, OK	Historic Ranch in McCurtain County, OK	\$2,100,000	NEW
525	McCurtain Co, OK	Sportsman's Paradise on Little River	\$1,837,500	NEW
980	Blaine Co, OK	Income Producing Quarry w/Mining Lease	\$2,600,000	new price
525	Wayne Co, MO	135/ac Private Lake - Hardwood Timber	\$2,895,000	new price
412	Barber Co, KS	Hunting, Agricultural, Grazing	\$1,075,000	
138	Kingfisher Co, OK	Cropland, Hunting, Grassland	\$415,000	new price
39	McCurtain Co, OK	Platted Residential Dev near Golf Course	\$975,000	new price
504	McCurtain Co, OK	Land + Home, Timber, Wildlife	\$3,700,000	new price
638	Roger Mills Co, OK	Hunting, Grazing, Spring Fed Pond	\$1,084,600	new price
114	Roger Mills Co, OK	Hunting, Grazing, Grassland	\$245,000	
156	Woods Co, OK	Res/Comm Development near Alva	\$499,000	new price
1.9	Taney Co, MO	D'monaco Luxury Resort	\$36,000,000	
2.5	Taney Co, MO	170 Room Hotel Development Project	\$8,500,000	
242	Comanche Co, KS	Agricultural, Grassland, Hunting	\$363,000	SOLD
1,894	Morton Co, KS	Dryland Farm Ground-CRP-Homestead	\$1,650,000	SOLD
620	Meade Co, KS	Grazing - CRP - Hunting	\$1,260,000	SOLD
780	Texas Co, OK	Grassland, Grazing, Hunting	\$741,000	SOLD
Lots	McCurtain Co, OK	Convenience Store - Recently Built	\$3,675,000	SOLD
880	Kiowa Co, KS	Agricultural, Hunting, Grass Land	\$1,760,000	SOLD
680	Seminole Co, OK	6 Tracts - North Canadian River	AUCTION	SOLD
11,242	McIntosh Co, OK	GILLESPIE RANCH - LAKE EUFAULA	\$23,600,000	SOLD
290	WOODS CO, OK	Little Sahara State Park 14 Tracts	AUCTION	SOLD
780	Alfalfa Co, OK	6 Tracts - CLASS 1 SOILS - Cropland	AUCTION	SOLD
477	Barber Co, KS	Grassland, Hunting, Ponds	\$950,000	SOLD
381	Kay Co, OK	Cropland 3 tracts near Blackwell OK	\$933,450	SOLD
255	Ripley Co, MO	40-acre Private Lake & Improvements	\$1,350,000	SOLD
1545	Roger Mills Co, OK	Hunting Land - Lodge - Springs & Creeks	\$2,999,000	SOLD
640	Woods Co, OK	5 Farm Land Auction	\$1,350,200	SOLD
405	Ottawa Co, OK	High Yield Cropland in Welch, Oklahoma	\$1,700,000	SOLD
150	Sumner Co, KS	Development/Cropland/River Clearwater	\$879,900	SOLD
11,391	McIntosh Co, OK	FISHER RANCH - LAKE EUFAULA	\$19,900,000	SOLD
897	Kingfisher Co, OK	8 Farms LAND AUCTION	\$2,548,772	SOLD
360	Lawrence Co, AR	25/ac Private Lake w/house & Hunting	\$1,295,000	SOLD
363	Kingman Co, KS	Lies in Sections 5&8-30S-10W	\$1,200,000	SOLD
1335	Barber Co, KS	Excellent Gyp Hill Hunting Sun City	\$2,100,000	SOLD
6300	Barber Co, KS	Medicine River Hunting Ranch	\$11,000,000	SOLD

BOOK YOUR LAND AUCTION NOW - EMBRACE THE TECHNOLOGY TO GET THE EXPOSURE YOUR PROPERTY DESERVES

PLEASE COMPARE OUR SERVICES TO EVERY REAL ESTATE & AUCTION COMPANY IN THE NATION BEFORE HIRING A REAL ESTATE PROFESSIONAL. CLIENT REFERENCES & MARKETING PROPOSALS AVAILABLE UPON REQUEST

Mitchell Terrel 580-732-0504
Bret Horn 580-737-0111
Steven Ward 580-430-8393
Shane Terrel 580-327-7889

HuntingCountry.Net

Obituaries

WANDA B. BOLLMAN



Wanda Belle Ricker Bollman was born October 9, 1931, to Ponder and Ethel Thomas Ricker at Gibbon, Oklahoma, and passed away peacefully in Wakita, Oklahoma, on October 4, 2024.

Wanda is survived by her three children: Cindy Bollman Murphy (Kenny), Cathy Bollman Graham (Terry) and Jeffrey Bollman (Ann); seven grandchildren and 14 great-grandchildren.

Funeral services were held at 10:30 a.m. Tuesday, October 8, 2024, at the Bethel Hawley Baptist Church in Hawley, Oklahoma. Burial followed in Fairview Cemetery west of Wakita.

Memorials in memory of Wanda may be made to the Fairview Cemetery, Bethel Hawley Baptist Church, or the Hawley Fire Department, and can be sent in care of Prairie Rose Funeral Home, 602 E. Main St., Anthony, KS 67003.

Leave condolences or view full obituary at www.prairierosefuneralhomes.com.

BRENT GORDON

Celebration of Life service for Brent Gordon will be Monday, October 21, 2024, at 1 p.m. at Lanman Funeral Home Chapel in Cherokee, Oklahoma. Arrangements are by Lanman Funeral Home Inc. of Cherokee. Online condolences may be made at www.lanmanfuneralhome.com.

CHARLES HENSON



Charles Henson, son of John and Nina Henson, was born in Gilbert, Louisiana, on March 22, 1945. He passed away peacefully at his home in Medicine Lodge, Kansas, on September 26, 2024, at the age of 79, surrounded by his

beloved wife and family.

Throughout his early years, Charles lived in various states, including Louisiana, Kansas, and Texas. His first job was at a meat market in Beaumont, Texas.

On September 27, 1980, Charles married Judy Harger in Alva, Oklahoma, blending their families into one of nine. A true jack-of-all-trades, Charles was a dedicated provider who excelled in construction, the oil field and car maintenance. His work took him to various towns across Oklahoma and Kansas, but his greatest joy came from family gatherings, cooking, fishing, and 'taking the scenic route' in search of old cars.

Charles never met a stranger; everyone he encountered quickly became part of his family. With a heart as big as his smile, he was always willing to lend a helping hand. Whether through words of encouragement or by literally giving the shirt off his back, his generosity knew no bounds. Charles's warmth and kindness touched the lives of many, and he will be remembered for his selflessness and unwavering devotion to others. He was the cornerstone of his family, a steady presence who offered guidance, love, and support to all who knew him.

He is preceded in death by father, John Henson; mother, Nina Henson; brother, Waymond Henson; brother, Glen Henson; brother, Ronnie Henson; sister, Oneida Henson; son, Stacey Lee Henson; daughter, Lesia Fern Henson and granddaughter, Mandy Lou Henson.

Survived by his wife, Judy Henson of Kansas; BG, his beloved chihuahua; siblings Billy Henson and wife Theresa of Texas, Faye Stone of Texas, Linda Bingham and husband Danny of Texas, Mattie Jarrett and husband Blaine of Virginia; children, Rickey Henson of Kansas, Theresa Henson of Kansas, Michael Henson and wife Tess of Kansas, Patty Harger of Oklahoma, Leatrice Henson of Kansas, William "Billy" Harger of Oklahoma; three nieces, Tiana Freeman of Oklahoma,

Tashanda Flores and wife Rosa of Oklahoma, Tara Pena and husband Nate of Oklahoma; countless grandchildren, great-grandchildren, nieces, nephews, friends and family friends.

A memorial service will be held at First Christian Church in Medicine Lodge, Kansas, at 4 p.m. on October 12, 2024.

Arrangements are by Affordable Cremations Plus, Wichita, Kansas.

JAMES PAUL SEWARD



Funeral services for James Seward will be 2 p.m. Friday, October 11, 2024 at Marshall Funeral Home Chapel. Burial will be under the direction of Marshall Funeral Home of Alva.

James Paul, son of Jonnie Carol Osborne II and Janice Lorraine (Seward) Osborne, was born March 8, 1987, at Chickasha, Oklahoma, and passed away suddenly September 26, 2024, at Pittsburg, Pennsylvania, at the age of 37 years, 6 months and 18 days.

James was raised in the Chickasha area and graduated high school from Ninnekah. He attended college for a couple of semesters at Connors State. He worked in the oil and gas field for many years, most recently as a snubbing unit supervisor for Excel Site Rentals, Rig and Snubbing in Pennsylvania. He was united in marriage to Angela Yvonne Baier on May 8, 2016, in their backyard. They have made their home in the Alva area where they are raising their family.

He loved all sports and played baseball in college. He was an avid golfer, enjoyed playing co-ed softball, playing pool, weight-lifting and fishing.

James is survived by his wife, Angela Seward of Alva; his parents, Jonnie Osborne II and wife Charla of Watford, North Dakota, and Janice Osborne of Alva; his children, Keegan Seward and Karter Seward (both of Alex, Oklahoma), Avonne Seward and Axton Baier (both of Alva); multiple siblings; his grandparents, Dale and Benny Tilly; many other relatives and friends.

Memorial contributions may be made in his memory to the funeral home or for his children's education.

Remembrances may be shared with the family at www.marshallfuneralhomes.com.



GET OUT OF LINE

...and go online for government services and information.

FirstGov.gov

The official web portal of the Federal Government

U.S. General Services Administration

HOME OF THE

\$14.88 OIL CHANGE

AND 21-POINT INSPECTION

Includes oil and filter up to 5 quarts.
Add \$1.99 for each additional quart of oil.

WE SERVICE ALL MAKES AND MODELS

TRAIL BOSS



2024 CHEVROLET COLORADO STOCK NO. 281443

4WD | AT

MSRP: \$42,375

OUR PRICE: \$41,499

NEW BODYSTYLE!



2024 CHEVROLET TRAVERSE RS STOCK NO. 211542

FWD | 2.5L | AT

MSRP: \$56,805

OUR PRICE: \$56,805

NEWLY DESIGNED!



2025 CHEVROLET EQUINOX LT STOCK NO. 154196

FWD | 1.5L | AT

MSRP: \$31,575

OUR PRICE: \$30,999



CHEVROLET

COME CHECK OUT OUR GREAT
SELECTION OF VEHICLES!

JEFF BRYAN

CHEVROLET.COM

SEE THEM AT JEFFBRYANCHEVROLET.COM

LOCAL TRADE

2021 FORD MUSTANG



STOCK NO. 108693

RETAIL: \$29,400

MILES: 37,236

OUR PRICE: \$24,999

DIESEL

2015 GRAND CHEROKEE LIMITED



STOCK NO. 748233

RETAIL: \$13,398

MILES: 144,405

OUR PRICE: \$11,999

LOCAL TRADE

2021 CHEVROLET SILVERADO 1500



STOCK NO. 219620

RETAIL: \$30,525

MILES: 77,411

OUR PRICE: \$27,999

RECENT TRADE

2010 JEEP WRANGLER



STOCK NO. 123983

RETAIL: \$13,425

MILES: 135,650

OUR PRICE: \$12,999

CUMMINS DIESEL

2015 RAM 3500 LARAMIE



STOCK NO. 613115

RETAIL: \$27,725

MILES: 243,212

OUR PRICE: \$23,999

1-OWNER

2021 TOYOTA 4RUNNER TRD PRO



STOCK NO. 935383

RETAIL: \$50,750

MILES: 43,307

OUR PRICE: \$47,499

WE BUY CARS - TOP DOLLAR PAID - CASH

JEFFBRYANCHEVROLET.COM

621 N. 7th STREET, KIOWA, KS 67070

620-825-4004

Cherokee man charged with assault using a car

By Marione Martin

A driver said he was driving fast to time his vehicle but slowed to 15 mph when anyone came into the street. Residents in the Cherokee neighborhood had a different story and cellphone video as proof.

On Monday, Sept. 23, at approximately 2:21 p.m. Cherokee Police Chief Ryan McNeil received a phone call from a resident who said a white Chevrolet Camaro was speeding and being driven recklessly in the 200 block of North Texas Avenue. She said this wasn't the first time the vehicle had sped in the same area in a reckless manner and requested an officer come by to stop the vehicle before someone was hurt. She said there were children and animals in the area that could be hurt.

About six minutes later, Alfalfa County Dispatch received a 911 call requesting officers at the same location for a report of a motor vehicle trying to run over a person. Based on descriptions, McNeil recognized the vehicle belonging to Jared Peffly. He had Cherokee Police Sergeant Tristan Hall go to the address to try to locate the vehicle and driver.

While driving to Texas Avenue,

McNeil was flagged down by another motorist who advised of an older white vehicle that was "tearing around" the same area of Cherokee.

Arriving at the address, McNeil spoke with the victim and two witnesses. They all stated that a white vehicle, discovered to be a 1975 Chevrolet Camaro, was speeding around the area in a reckless manner. The subjects stated that the vehicle made three passes around the residence, speeding and driving in a manner that caused them to be concerned as there were normally children and animals in the area that could be struck. They stated they shouted for the driver to slow down, but the driver kept speeding in the area.

When the vehicle came back past the residence a third time, the victim stepped out onto the side of the roadway to confront the driver during which time the vehicle came around the corner, sped up and almost struck her. The incident was captured on cellphone video by the subjects, who immediately called and reported the incident to law enforcement. According to the affidavit, the videos show the vehicle speeding around the residence with the vehicle appearing to

speed up and almost strike the victim.

During this time, Hall located the vehicle and Jared Peffly outside a residence on South Pennsylvania Avenue. Hall stated that Peffly told him he had been driving the vehicle to "time it" and that he slowed down to 15 mph when a person came into the street while he was driving the vehicle.

According to the affidavit, the videos recorded by witnesses showed Peffly's vehicle traveling at a much greater speed than the 15 mph he claimed. It appeared to Chief McNeil that the vehicle was traveling at 40-45 mph.

Jared Dustin Peffly, 21, of Cherokee, has been charged with assault with a dangerous weapon, a felony. He is accused of the "assault of one JoAnn Lutrell with a dangerous weapon, to wit: a White 1975 Chevrolet Camaro, with intent to do JoAnn Lutrell bodily harm. This crime is punishable by imprisonment for up to 10 years in the penitentiary.

Peffly is also charged with reckless driving, a misdemeanor, for driving in a careless or wanton manner at a speed that was neither careful nor prudent.

WHAT DID THE SLINKY SEVEN DO FOR ALVA?
 We will tell you October 24th & 26th at the Cherokee Strip Museum of Alva!

Legacy
 CARPET CLEANING & RESTORATION

Residential & Commercial Carpet Cleaning
 Upholstery Cleaning
 Tile & Grout Cleaning
 Emergency Water Removal

Call 580-430-8194 to schedule

104 S. 4th Street, Kiowa
 620-770-6513

A little somethin' for everyone!

Sameta's
 of Kiowa, KS

- Bath Bombs & Soaks
- Soaps & Lotions
- Natural Deodorants
- Natural Laundry Detergent
- Pot Steamers
- Freeze Dried Goods
- Vehicle Scents
- Coffee Grounds
- Tea Leaves
- Gifts

...and more!

Monday, Tuesday, Thursday, & Friday 9 am - 6 pm & Saturday 9 am - 12 pm

To Report Someone Littering Call:
1-888-5-Litter

FDIC FDIC-Insured - Backed by the full faith and credit of the U.S. Government



COMING SOON

GoBanking at your go to bank!



Call today at
580-327-5500

Are you prepared for November 15th?
Call us to find out more!

DOWNTOWN ALVA

DECEMBER 6-8

BRING CHRISTMAS



HOME FOR THE HOLIDAYS



Shop the Pocket Park **Inflatables** *hot chocolate* **GRACEFUL ARTS** Live Music **Santa & Mrs. Clause**
REINDEER SHOPPING *Children's Christmas* **Make & Take** **SMORE'S & STORIES IN ELSA'S IGLOO** **CHRISTMAS CAROLS**
& PHOTO OP *Shop Artwork* **SHOP VAP** **RIALTO MOVIE** **Carnival GAMES** **LIBRARY BOOK SALE**
Shop WRAPPING Station **Santa's BAKERY** **Pizza** **FACE PAINTING** **ALVA BEER CO.**
LIGHT PARADE **ACT 1 Christmas Matinee** **FREE Cookie Decorating** **Bed Races** **Grinch & SANTA**
ELSA, ANNA OLAF, & KRISTOFF **Christmas Movie @ the Extreme** **Food Trucks** **BAKE SALE**
SOUP & STROLL **WICKED GRIND COFFEE** **Talent Show**

Alva has 3 days of FUN coming up in December, so be sure & invite your family and friends to come HOME Dec. 6-8 to celebrate! More info on times and line up later, but here's a sneak peak at all the FUN coming our way!



If you would like to learn more about these projects or sponsor a larger Christmas display in memory of a loved one, please email communications@alvaok.net.

Order Forms Due October 15

Order forms for Tree of Love Luminary Bulbs and Tree of Life Stars are available at www.alvaok.net under the Christmas tab or you can fill out this form and drop a check at the Alva Chamber Office: MWF from 10am-2pm or mail to 502 Oklahoma Blvd. Alva. Both trees will have a designated area on the Woods County Courthouse Lawn with a commemorative sign displaying the names of those honored and remembered.



Tree of Love 'In Memory of' Luminary

8 Inch Bulb \$30
16 Inch Bulb \$75

12 Inch Bulb \$50
20 Inch Bulb \$100

In Memory of _____

___ 8" Bulb ___ 12" Bulb ___ 16" Bulb ___ 20" Bulb

In Memory of _____

___ 8" Bulb ___ 12" Bulb ___ 16" Bulb ___ 20" Bulb

In Memory of _____

___ 8" Bulb ___ 12" Bulb ___ 16" Bulb ___ 20" Bulb

Tree of Life 'In Honor of' Star

17 Inch Star \$50
24 Inch Star \$75
30 Inch Star \$100



In Honor of (Name or Family) _____

___ 17" Star ___ 24" Star ___ 30" Star

In Honor of (Name or Family) _____

___ 17" Star ___ 24" Star ___ 30" Star

Follow the Alva Chamber of Commerce on Facebook & Instagram and visit www.alvaok.net to sign up for the weekly Chamber Newsletter for the latest updates.



The 72nd annual Miss Cinderella Pageant winners are, from left, Miss Pond Creek-Hunter Reagan McReynolds, Miss Congenitally; Miss Waynoka Marile Pitts, fourth runner-up; Miss Laverne Selah Bentley, talent winner and first runner-up; Miss Woodward Zoey Roberts, Miss Cinderella 2024; Miss Shattuck Abbey Elam, interview winner and second runner-up; and Miss Mooreland Neely Norman, third runner-up. *Photo by Desiree Morehead*



The 72nd annual Miss Cinderella Pageant was held Thursday and Friday, where 15 young ladies competed for the title Miss Cinderella. *Photo by Desiree Morehead*



UPCOMING AUCTIONS

WOODS COUNTY LAND AUCTION – SOUTH OF HOPETON / WEST OF CARMEN

Live Auction with Simulcast Bidding (Signal Permitting)

75± ACRES IN WOODS COUNTY (OK) • PRODUCTIVE GRASSLAND | TIMBER

LEGAL (SURFACE ONLY): N/2 NE/4 of Section 27, T24N - R14WIM, Woods County, OK. Surface Rights Only

LAND OVERVIEW: An approx. 75-acre tract of native grassland, timber/cover / fencing on two sides. Open areas of grassland for cattle grazing, hunting & recreation.

MINERALS: Farm Sells Surface Rights Only, no minerals will convey.

POSSESSION: Possession will be given at closing.



Friday, October 25 • 10am
Live On-Site Auction

CHEROKEE PIPER 180 AIRCRAFT TIMED ONLINE AUCTION – ENID, OK

More Information Coming Soon!

PREVIEW: By Appointment at Woodring Airport

BIDDING ENDS NOVEMBER 7 • 6pm*
Bid will extend if active bids are being placed.



FALL TIMED ONLINE CONSIGNMENT AUCTION — Call today to consign!

NOW IS THE TIME TO SELL... QUALITY & USED EQUIPMENT SELLING AT AN ALL-TIME HIGH!

Currently taking consignments for:

- Tractors
- Livestock Equipment
- Trucks
- Vehicles
- Trailers
- More

Low selling fees split between buyer and seller.



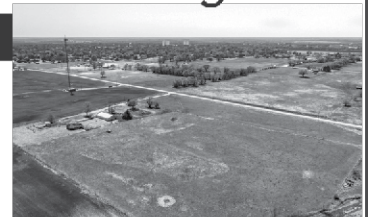
CONSIGN NOW FOR NATIONWIDE EXPOSURE
Over 500,000 Registered Bidders in our database
Additional digital advertising through Equipment Facts, Tractor Zoom, Machinery Pete & More

CALL OR TEXT TODAY
JOSH (580) 748-0787
RANDY (580) 829-1129
MATT (580) 334-7374
CLINT (580) 554-0592

FOR SALE *Call today to schedule viewing!*

10± ACRES ON THE EDGE OF ANTHONY, KS

Located on the North end of Sante Fe Street on the NE side of Anthony, KS, this is a unique tract that is located just inside the county outside of the city limits but has great access via the paved city street. The tract offers power, electricity, & water and has an older horse/livestock barn, enclosed with permanent fencing & nice open areas of established grasses. A former homesite is next to the building, making this a great place to build your own spot or have a place for horses or show projects close to town.



COMPLETE LISTING & PHOTOS AT **CALLBELLAMY.COM**



Woods County Commissioners interview Easley Associates Architects of Enid for the senior citizen center projects in Alva and Waynoka. From left are Commissioner John Smiley, Seth Benson, Roy Easley, Matt Easley and Commissioner Randy McMurphy. Photo by Marione Martin

Easley Associates chosen for Woods County senior citizen center projects

By Marione Martin

On Thursday, Oct. 3, the Woods County Commissioners interviewed a second architectural firm for the two senior citizen center projects in the county. Roy Easley, Seth Benson and Matt Easley of Easley Associates Architects met with Commissioners Randy McMurphy and John Smiley to discuss the projects.

Roy Easley presented a booklet and flash drives on a sampling of their work. He said they have done projects for Alva churches, schools and Northwestern Oklahoma State University for many years. Recently they finished work on the new gym at Burlington Schools.

He said they looked at the site of the new Alva center on Choctaw St. and it “looks perfect.” Benson showed the commissioners a sketch they had started for that project. Although they didn’t tour the Waynoka building, in the past they looked at an addition for that location.

McMurphy explained the time constraints for the projects. Since it took so long to get paperwork done on the

Alva site, the county is “up against a deadline” because they are using ARPA funds. Those funds must be encumbered by the end of this year and spent by the end of 2026.

Roy Easley said that was “not a problem for us.” He said he didn’t see any obstacles with the deadline.

McMurphy explained the commissioners originally looked at a 60 x 40 ft. rectangular metal building for Alva but the senior citizens who will be using it want a larger building to include storage, around 3,500 to 4,000 sq. ft.

Easley said they worked on a senior center project in Woodward that started at 3,500 to 4,000 and grew.

McMurphy said the Alva nutrition center serves about 125 meals a day including meals that are delivered. The building will need to include handicapped bathrooms, an office, an approved kitchen and a meeting room as well as storage.

Smiley said the Waynoka site only needs a warming kitchen since they aren’t the county nutrition site. He said the building there has been stripped of

all sheetrock and insulation. Easley said it sounded straight forward and asked about parking. Smiley said the parking isn’t part of the project.

McMurphy asked about preliminary testing of the Alva site with core drilling. Easley said he has contacts who do that although it isn’t part of his company’s service. He said grades will need to be “shot”, and McMurphy said the county uses CED#8 for that kind of work. Easley said they will coordinate the work even if it is not included in their fee. Asked about charges, Roy Easley said they charge seven percent of the project. This does not include any civil engineering.

A video of the Oct. 3 meeting may be viewed at www.AlvaReviewCourier.com by clicking on Videos.

Monday, Oct. 7, Meeting

At their regular meeting on Monday, Oct. 7, the Woods County Commissioners selected Easley Associates for architectural work on the two senior citizen center projects.

See Easley Page 30

Planning Winter Nutrition

Topics:

Value of Hay Testing

Winter Nutrition Options

Feed Budgets for Cows and Calves

Come to discuss winter feeding options for calves and cost effective supplementation for cows.

October 29 | 12 Noon
NW Technology Center

We are also taking appointments for livestock nutritional consultations

Please RSVP to 580-327-2786 by October 28 for a lunch count!



EXTENSION



ALVA STATE BANK & TRUST CO.
518 COLLEGE • ALVA • 327-3300



From Page 28 Easley



This is 4-H Week with Woods County Commissioners issuing a proclamation Monday. From left are Commissioner Randy McMurphy; Aleesha Boyett, 4-H program assistant; Katy Hittle, ag and 4-H coordinator; District 1 Foreman Damien Starks; Susan Holliday, extension educator for FCCLA and 4-H; and Commissioner John Smiley. Photo by Marione Martin

McMurphy, Smiley and District 1 Foreman Damien Starks were present for Monday's meeting.

Smiley made the motion choosing Easley Associates for the projects saying, "I think they explained it better, and they can do it on time." He pointed out the other architectural firm was "iffy" on the time restrictions. The others agreed, and Smiley's motion carried.

This is 4-H Week, and McMurphy read the proclamation before the others signed it. Susan Holliday, extension educator for FCCLA and 4-H, said that Woods County 4-H has about 150 members with three active clubs in the county. There are also two Cloverbud clubs for younger ages. Accompanying Holliday were Katy Hittle, ag and 4-H coordinator, and Aleesha Boyett, programming assistant in 4-H.

The commissioners voted to hold

the regular employee safety meeting on Thursday, Dec. 5. County Clerk Shelley Reed said the Merchants Building at the county fairgrounds is available for the gathering. The courthouse will close about 11 a.m. so everyone may attend.

The commissioners discussed a support letter for the FY25 CED BIP grant application. McMurphy said the grant amount is above and beyond what CED (Civil Engineering Districts) can apply for. He said all CED counties are asked to sign letters of support for the application. This grant is for three rural bridges in the panhandle of the state. Starks made a motion, seconded by Smiley, to approve signed the letter, and the motion carried.

The commissioners approved a request for use of the courthouse stage area on Oct. 25 for the Alva Public Schools Homecoming Pep Rally. The pep rally is held right after the homecoming parade which begins at 2 p.m.

The commissioners approved a

resolution to dispose of a 2016 Ford pickup (brush rig). This completes the sale of the pickup for the high bid accepted at the Sept. 30 meeting.

The following monthly reports were approved: Assessor Collections \$91.00; County Clerk Office Collections \$9,141.94; Court Clerk Office Balance \$53,782.22; Court Clerk RM & P Balance \$19,218.50; Health Dept. Collections \$425.00; Election Board Balance \$6,813.13; Sheriff's Office Collections \$1,869.89; Board of Prisoners Expenses \$7,529.01; Treasurer's Office Balance \$17,416.33.

The commissioners also approved minutes of two meetings, corrected minutes for Dec. 18, 2023, warrants, claims monthly appropriations and blanket purchase orders.

Under new business, McMurphy said it sounds like Commissioner David Hamil's medical health is improving, but he can't guess at when he'll be able to attend meetings.

ELECT **RANDY McCULLOUGH**

WOODS COUNTY SHERIFF

- ✓ INTEGRITY ✓ PROFESSIONALISM
- ✓ ACCOUNTABILITY ✓ FAIRNESS
- ✓ TRANSPARENCY ✓ LEADERSHIP



VOTE NOV. 5TH

PAID FOR AND AUTHORIZED BY RANDY MCCULLOUGH FOR WOODS COUNTY SHERIFF 2024

Woods Co. Land Auction **Wednesday, October 30th 10 a.m.** **Auction & Land Location: 4 miles west of Camp Houston on Highway 64**

This 160± acre tract offers an excellent combination of fishing, hunting, and good grazing complete with good access and is a very low maintenance property. A Beautiful Pond lies on the north end of the land and following this pond is a big open grass draw that runs south to southwest. There is Highway 64 access on the north side of the big tract through two sets of steel gates and across on the east side on County Road 217. This is a property with LOTS of potential.

Seller: Jodi Gillett POA for Marietta Graham



Auction & Realty, Inc.
580-254-3975

Ira Smith Auctioneer/Broker (580) 384-6001

"Serving NW Oklahoma with Integrity and Pride since 1982"

smithcoauctions.com

CHEROKEE STRIP MUSEUM PRESENTS

Talking Tombstones

Bringing Alva History to Life!

The Slinky Seven and other Local Legends



Tours begin every 15 minutes, starting at 6 to 7:30 pm
Admission \$10.00/person at the door

Extra parking north of the annex

OCT 24 & 26

- History of Bill Johnson Correctional Center by Janice Melton and Becky Guffy
- Don Benson presented by Brenda Rose and Arden Chaffee
- Dean Linder presented by Ben Buckland
- Ted VanLandingham present by Mark VanLandingham & Susan Wagner
- Ed Sutter presented by Matt Sutter and Blair Sutter
- Richard Ryerson presented by John Ryerson
- Jim Holder presented by Todd Holder
- Homer Jones presented by Johnny Jones
- Dr. Alfred Hinkle presented by Donna Fearing & Mika Cahoj

Plan to attend and spend an enjoyable evening at the museum.

Don't miss this entertaining and educational event.

Props created by Alva High Art Club.



This group of KDH employees dress for Kiowa’s Kentucky Derby as the committee for the Jeans and Gems event.

10th Annual Jeans and Gems raises \$53,000 across the finish line for KDH Foundation

Proceeds to help KDH become a Trauma Level IV Emergency Service

By Yvonne Miller

It may have been the 150th Run for the Roses at Churchill Downs in Louisville, Kentucky, last May, but the event was a spectacular first in Kiowa, Kansas, in September. As the stick horses crossed the finish line in Kiowa’s Kentucky Derby, the big winner was the Friends of the Kiowa District Hospital/Healthcare and the Friends of the KDH Hospital Manor Foundation.

Walking into Kiowa’s 10th Annual Jeans and Gems fundraiser, you found women in their finest, colorful dresses with coordinating Kentucky Derby style hat. Some guests were dressed as jockeys. Guests perused unique items for sale in the silent auction. Watch for a feature next week with Buddy Williams,

who was a jockey in his earlier days.

Next came a dinner worthy for the winner’s circle, featuring fire-grilled filets, salad, green beans, cheesy potatoes and gourmet cupcakes.

The live auction followed with select, highly sought food items that bring beyond premium prices, handmade jewelry, a Discovery Flight, quilts, arrowhead/buffalo nickel shadowboxes made by local craftsman Mike McGinley, and other items as special as the care providers give their patients.

The crowd had fun the rest of the evening playing casino games. An especially popular game was SINGO (a music-related game like Bingo).

Foundation President Judy Schrock said the evening is always fun and

profitable for the foundation, which financially assists the hospital and manor with equipment and projects throughout the year. She said the event raised \$53,000 this year.

This year the foundation will help financially as the hospital works to become accredited as a Trauma Level IV Emergency Service. Schrock said the process should take about a year. The foundation will help fund items such as staff education, equipment and more for this achievement.

CEO Janell Goodno explained that Brandy Campbell is now in charge of the Trauma Level IV certification. Trauma Level IV centers are designed to provide

See KDH Page 34

A fall at home takes Kiowa Councilman Wells out over six months

Wells' story of recovery and tragedy

By Yvonne Miller

“You have to be tough. My hopes and dreams are gone. But I’m ready for the next round,” Tom Wells said. Still carrying a British accent, as he was born in England and lived there some as a child, he’s been a Kiowa resident since about 1980. Wells told his story about a physical fall, his lengthy road of recovery and losing his wife in the middle of the ordeal. A longtime Kiowa City councilmember, he’s also the owner of Wells Paint Service and has been a painter most of his 77 years. He’s also sold AdvoCare for years.

“February 2, I fell and whacked my head on the trim of the wall by the shower in the bathroom. I was too tired and shouldn’t have taken a shower. My wife Stacia had been sick and I had been caring for her.”

He was taken by ambulance to the Kiowa District Hospital ER and the

crew also took Stacia with them. “We said our goodbyes in that ER. Not knowing it really would be the last time I’d ever see my wife,” a barely audible Wells muttered as his voice quivered with emotion.

When asked about his wife’s illness, Wells replied, “Cigarettes. Some told me she had a heart attack, others said she had emphysema.”

Wells was critically injured in his fall that caused a brain bleed and emergency workers wanted to have him flown by medical helicopter, but the weather was too bad. He praised then Kiowa Police Chief Travis Peterson “and the girls who drove me (in the ambulance) through that storm to get me to the hospital in Wichita. I understand they got me there with only minutes to spare so God bless them,” he said. “My consciousness diminished a lot on the trip up there. I

was almost gone and they saved me.” Wells will candidly tell you that his memory was damaged in the accident.

Since the accident in February, Wells was in the hospital or rehab. He estimates he was there maybe a week when he was told of Stacia’s passing. She was staying with her sister in Alva since his accident, Wells said.

Wells had some temporary paralysis after the accident. He described having real pain from his injuries and “lots of emotional pain.” During this interview that emotional loss spilled out as he tried to talk about Stacia several times and just couldn’t. They were married over 40 years.

He couldn’t say enough kind words for the professionals helping him. Besides their help, Wells said, “I built up my muscles by pushing myself up and

See Kiowa Page 34

Do people think of your business first?

Our small, low-cost contract ads keep your name and products in people’s minds two times a week.

Larger ads are handy for special sales, promotions and events.



Contact Bill (sales@alvareviewcourier.net) or Stacy (stacy@alvareviewcourier.net) for advertising information.

Alva Review-Courier/Newsgram
620 Choctaw St. • Alva, OK • (580) 327-2200

From Page 32 **KDH**

advanced trauma life support prior to the patient's transfer to a higher level of care. Campbell started working on the project in May of this year and her goal is to have it completed by May 2025. She's going piece by piece through the requirements and will soon start nurse training. Following the application for certification there will be a survey to determine if the certification is approved. The other nearest Trauma IV centers are in Pratt, Wichita and Enid.

"The certification won't add to reimbursement, but the nursing team will have ongoing training working towards sustainability. We now have three strong leaders (Mallory Allison and Tami Hill at the hospital and Kamri Theis at the manor) in emergency preparedness and they will help improve nursing skills," Goodno said.

From Page 33 **Kiowa**

from the rehab facility, he stayed with his sister Janice (whom he fondly calls "Jenny") and her husband at their home in South Haven. As Wells improved, Jenny drove him to a few city council meetings.

In early September, Wells moved back to Kiowa and is living in an apartment. "A few local citizens are helping me every day. People you would never expect. I appreciate their help so much," Wells said.

After all Wells has been through this year, a recent biopsy determined he has lung cancer. It's a spot doctors have monitored for a while. He was supposed to have surgery Tuesday to remove it. "I can't believe after all this rehab and all we've gone through that God would let cancer end it," Wells said.

"All I can say is bring it on," Wells said of his bad news. He's faced multiple financial woes. "I've lost everything - my trucks, my business. But there's a lot worse out there than what I dealt with. I really have nothing to complain about."

As soon as he's able, Wells said he would like to work and is getting his painting business ready. "Kiowa is a nice quiet town - a good place to live," he said.

"If I die today, I haven't wasted anything. I've had a full life. But I ain't done yet," Wells promised.



In the center of this photo is a jockey for the KDH Kentucky Derby fundraiser. She is Pat Nida, daughter of "Dr. Pat," one of the first doctors at KDH. Pat came to Jeans and Gems with her Alva friends: Diane Grice, Donna Fearing, Annie and Janice Melton.

Putting you first made us #1



With competitive rates and personal service, it's no wonder more drivers trust State Farm®. As your local agent, I'm here to help life go right.® LET'S TALK TODAY.

Stephanie Eaton Ins Agency Inc.
Stephanie Eaton, Agent
328 Oklahoma Blvd
Alva, OK 73717
580-327-3600



ETA **Call 1-888-382-3311**
to learn where you can open an ETA™.
A message from the U.S. Department of the Treasury

U.S. SAVINGS BONDS
Creating a New Century of Savings

Fall Back Into Savings!

RECLINERS.....Starting at **\$399.00**
WASHERS & DRYERS.....Starting at **\$499.00/ea**
FREEZERS ON SALE!
Check Out All The New FALL DECOR!



G & G Home Furnishings
HWY 281 SOUTH • 2107 COLLEGE AVE.
PH: 580-327-6635 • HRS M-F 9-5:30 & SAT 9-4
www.gandghomefurnishings.com
Ask Us About **0% FINANCING** & Free Delivery



LAND - MINERALS - HOMES - EQUIPMENT



WIGGINS

Upcoming Auctions

MALY FAMILY TRUST

Wednesday Oct 16 160 +/- Acres | Family Getaway Cabin & 60' x 80' Machine Shed | Productive Sm. Grain/Livestock Land | 3 Ponds & Peninsula Bison/Hennessey Area, Garfield Co., OK

STEVE & SUSIE NEIMAN

Wednesday Oct 23 Attractive 3 BDRM, 1 1/2 BA, Handicap Accessible Home w/ Attached Garage Perry, Noble Co., OK
Also Selling Online Only: Furniture, Appliances, Household & Yard Items

JOHN & BRANDILYN HONEYWELL

Tuesday Oct 29 160 +/- Acres | Modular Home & 40' x 60' Barn with Office Space | Improved Bermuda and Native Grass Pasture | 4 Ponds & Live Creek Hunting & Fishing Potential Perry/Lucien Area, Noble Co., OK

WigginsAuctioneers.com
580.233.3066

Make a real impression...

choosing quality jewelry in person makes a lasting memory



EDIGER'S DIAMONDS

402C

If you don't know jewelry, know your jeweler.

EDIGERS

DIAMONDS

Enjoy **FREE** Estimates on Our Services

402-G S Oakwood
Enid, OK 73703

580-237-2101

edigersdiamonds.com



NEWSPAPERS CONNECT COMMUNITIES



74% of Americans believe
it is important to have
a local newspaper.
Newspapers define the
culture of a community.



Telling Our

STORIES

CELEBRATING OKLAHOMA NEWSPAPER WEEK | OCTOBER 6-12, 2024

Source: America's Newspapers 2023 Local Newspaper Study
conducted by Coda Ventures.



Fri., Oct. 18th at 10 am LIVE/ONLINE	Charlene M. Fields Trust Auction 152.42± Acres Garfield County, OK - Cropland Grass * Timber Creek - 11326 S. Imo Rd., Waukomis, OK
Sun., Oct. 20th at 6 pm ONLINE ONLY	Beverly Kinzie Auction Antiques – Lighting – General Store – Advertising Ephemera – Pottery – Delfta Blue – Lanterns Ice Cream Shoppe – Medical Quackery. This is one of the coolest collections we have had the privilege to sell. This is one of 2 auctions for this family. 7645 W. Purdue, Enid, OK - West Shop
Sun., Oct. 20th at 6 pm ONLINE ONLY	Preview October 17th from 9 AM-3 PM 412 Dozer Service Retirement Auction Crawler Dozers – Motor Graders – Wheel Loaders Peterbilt – Eagle & Dump Trailers – Tractors Scrapers - Silverado Pick-ups 40458 Hwy 412, Ringwood, OK 73768
Wed., Oct. 30th at 10 am LIVE/ONLINE	Sleep Inn & Suites Hotel in Hennessey, OK: 50- Rooms Income-producing Event Center * Full Operational Currently Operating - No Reserve Auction. 600 N. Main St., Hennessey, OK
Wed., Oct. 30th at 3 pm LIVE/ONLINE	Jerry & Janice Clark Auction 3519 Blackjack St., Enid, OK Nice Home * Nice Rental Property
THINKING ABOUT SELLING YOUR PROPERTY? LIST—MARKET—SOLD	
LippardAuctions.com 580-237-7174	

ALVA VISION CLINIC Dr. Scott McEachern

October is Eye Injury Prevention Month

More than 1 million people are affected by eye injuries every year, and 90% of those injuries could be prevented by wearing protective eyewear. You should always wear safety goggles or glasses when working in the yard or workshop, jumpstarting or working on your car, working with cleaning products or chemicals, and participating in some sports and recreational activities.

We carry a large selection of safety glasses and sports goggles. Stop in today, and we can help you choose the perfect pair!

Congratulations to Pat Harkin on winning the NWOSU cross-stitch during Homecoming!

WE ARE PROVIDERS FOR Aetna Better Health, BCBS, EyeMed, HealthChoice, Medicare, Oklahoma Complete Health, PVCS, VSP and Vision Care Direct.

WE ACCEPT Visa, Mastercard, American Express, Care Credit, Cash and Checks

Hours: Mon. & Thurs. 8-5:30 | Tues. & Wed. 7:30-5:30;
Closed 12-1 Daily | We take a 5:15 appointment daily!

504 College, Alva, OK • FOR AN APPT 580-327-2393

ATTENTION

Nutrition and Senior Center at 625 Barnes has meals as follows:

OPEN
Mon to THURS
9am-3pm

HOME DELIVERY FOR HOMEBOUND
DINE-IN OR CARRY-OUT AT 12 PM NOON

Reservations required for everything the day before by calling 580-327-1822

SENIOR NUTRITION CENTER IN ALVA AT 625 BARNES



SENIOR MENU

60yrs+ \$3.00 suggested Donation | 59yrs & Under - \$7.00

WED., OCT. 9	THURS., OCT. 10	FRI., OCT. 11	MON., OCT. 14	TUES., OCT. 15
Cilantro Lime Chicken Over Rice Pilaf Broccoli Tossed Salad w/Dressing Margarine Applesauce Jell-O	Lasagna Cauliflower Peas w/Mushrooms Garlic Bread Tapioca Pudding	CLOSED	Meatloaf w/Catsup Topping Mashed Potatoes w/Brown Gravy Zucchini Hot Roll w/Margarine Ice Cream	Chicken and Dumplings Broccoli-Cauliflower Salad Pickled Beets Cornbread w/Margarine Pineapple w/Topping
WED., OCT. 16	THURS., OCT. 17	FRI., OCT. 18	MON., OCT. 21	TUES., OCT. 22
Scrambled Eggs Sausage Oven Fried Potatoes Biscuit & Cream Gravy Margarine Peaches Cinnamon Roll	Sloppy Jo Orzo Coleslaw Whole Kernel Corn Hot Roll w/Margarine Snickerdoodle Cookies	CLOSED	Spaghetti w/Meat Sauce Vegetable Medley Tossed Salad w/Dressing Garlic Bread Chilled Apple Slices	Ham & Beans w/Onion Slices Tomato Spoon Relish Cornbread w/Margarine Cinnamon Raisin Bread Pudding w/Lemon Sauce

PEOPLE FROM ALL WALKS OF LIFE EAT AT THE SENIOR CITIZENS CENTER







20% OFF THRU OCTOBER!




IN BUSINESS FOR YOUR HEALTH SINCE 1952

HOLDER DRUG



513 BARNES - ALVA, OKLA.
(580) 327-3332



SB FOOTBALL HOMECOMING ROYALTY – South Barber’s Football Homecoming Royal Court consists of: (from left) sophomores Zaphier Clausing and Miley Turner; Queen Riley Michel; senior escort Oakley Duvall; candidate Reagan Grieve; freshmen Steele Smith and Alyssa Sciara; juniors Wyatt Dotts and Tanith Erikson; and, in front, kindergarten helpers Sam Bogatay; Kennadie Cox, Avrianna Paasch and Oen McNett. *Photo by Yvonne Miller*

RILEY IS QUEEN – Riley Michel is the 2024 South Barber Football Queen. She was crowned queen on a night to celebrate as the Chieftains 45ed their opponent by the end of the first half. *Photo by Yvonne Miller*



Call toll-free 1-800-FED-INFO to find out about government programs, benefits, and services.

Mark important occasions –
Anniversaries,
Engagements,
Weddings,
Births

Alva Review-Courier Newsgram
620 Choctaw St., Alva
580-327-2200
email:
manager@alvareviewcourier.net
Credit Cards Accepted

THE EYE SITE, PLLC 
CALLIE MOSBURG, O.D.

Family Eye Care and Vision Therapy Center
921 Oklahoma Blvd., Suite A | Alva
Mon., Tues., & Thurs. 9-5:30 | Closed Wednesday | Fri. 9-1:00 pm
theeyesitealva.com
(580) 748-8007

Thursday, October 10th is



This year on World Sight Day, we set to focus the world's attention on the importance of eye care in young people and inspire children everywhere to love their eyes.

Love your eyes! We do!

We are in-network providers for VSP, Vision Care Direct, Aetna, PVCS, SoonerCare, Medicare, BCBS, United Healthcare, Oklahoma Complete Health, & HealthChoice. Providing comprehensive eye care, glasses, contact lenses, disease management, and vision therapy for all ages.

KIOWA 
DISTRICT HEALTHCARE

We Are **HIRING**
CNA DAYSHIFT
\$1,000 SIGN ON BONUS

Apply At:

www.kdhks.com/jobs



1002 South 4th Street, Kiowa Kansas
Tel: 620-825-4131



BELLAMY & COMPANY PRESENTS

Cherokee Car SHOW



POSTPONED

CHEROKEE RV PARK
NORTH OF CITY HALL ON GRAND · CHEROKEE

• Trophies • Poker Walk • Burn Out Whoa & Go • Top 15 • Cash Prizes

REGISTRATION Pre-Registration: \$12 | Event Day: \$15
Pre-registration available at [Facebook.com/CherokeeCarShow](https://www.facebook.com/CherokeeCarShow)

Voter registration deadline approaches

Friday, Oct. 11, is the last day to apply for voter registration in order to be eligible to vote in the Nov. 5 General Election, Woods County Election Board Secretary Holly Blevins said today.

Blevins said that persons who are United States citizens, residents of Oklahoma, and at least 17 1/2 years old are eligible to apply for voter registration. However, you must be at least 18 years old to vote.

Applications must be received by the county election board or postmarked no later than midnight, Oct. 11. Applications postmarked after that time will be accepted but will not be processed until after the Nov. 5 election. Applications may also be submitted to any motor vehicle agency that is also an official voter registration

agency by the submission deadline.

Applicants will be notified in writing when their application has been processed. Approved voters will receive a voter identification card in the mail. Some may receive a letter that explains the reason or reasons the application was not approved. Blevins said those who do not receive a response within 30 days of submitting their application should contact the county election board office immediately.

The Woods County Election Board reminds voters that applications must be approved by the county election board secretary in order to vote.

Registered voters who have moved to Woods County from a different county or state will need to complete a new voter registration application in order to be eligible for elections in Woods County.

If you have moved within the county and need to update your address, you may make changes online using the OK Voter Portal at oklahoma.gov/elections/ovp or complete a voter registration application.

Voter registration applications can be downloaded from the state election board website at oklahoma.gov/elections. You may also complete a form at your county election board. Most post offices, tag agencies, and public libraries have applications available upon request.

The Woods County Election Board is located at 427 Barnes Ave., Suite 2, and is open from 9 a.m. to 3 p.m., Monday through Friday. For questions, please contact the Election Board at 580-327-1452 or woodscounty@elections.ok.gov.

Fearful residents flee Tampa Bay region as Hurricane Milton takes aim at Florida coast

By Terry Spencer and Haven Daley
TAMPA, Fla. (AP) — Fearful Florida residents streamed out of the Tampa Bay region Tuesday ahead of what could be a once-in-a-century direct hit from Hurricane Milton, as crews worked furiously to prevent furniture, appliances and other waterlogged wreckage from the last big storm from becoming deadly projectiles in this one.

The preparations marked the last chance for millions of people in the Tampa metro area to prepare for lethal storm surges, ferocious winds and

possible tornadoes in a place that has narrowly avoided a head-on blow from a major storm for generations.

"Today's the last day to get ready," said Craig Fugate, a former FEMA director who previously ran the state's emergency operation division. "This is bringing everything."

Gov. Ron DeSantis said the state deployed over 300 dump trucks that had removed 1,300 loads of debris left behind by Hurricane Helene by Tuesday afternoon. In Clearwater Beach, Nick Szabo spent a second long day hauling

away 3-foot piles of soggy mattresses, couches and drywall after being hired by a local resident who was eager to help clear the roads and unwilling to wait for overwhelmed city contractors.

"All this crap is going to be missiles," he said. "It's like a spear coming at you."

After weakening slightly, Milton regained strength Tuesday afternoon and became a Category 5 storm again, with winds of 165 mph (265 kph). It could make landfall Wednesday night in the

See Tampa Page 42

<p>Car-Toons</p> <p>Long time salesman Shaun Nokes moves into management</p> 	<p>All the while, they've been building up their family of customers!!</p> 	<p>Scotty Jackson, becomes the used car manager and the call goes out...</p>  <p>Come Join the Family!</p>
---	---	---

580-430-9082

INTEGRITY

GENERAL CONTRACTING &

CONSTRUCTION

METAL BUILDINGS

Custom Metal Buildings

- Weld-up metal buildings
- Post-frame buildings
- Concrete

SERVICING ALVA & SURROUNDING AREAS

580-430-9082

integrityconstructionllc@outlook.com

NORTHWESTERN SPORTS SLATE

Thursday, October 10th
6:00 PM

Volleyball vs Arkansas Monticello

Friday, October 11th
4:00 PM

Volleyball vs Southern Arkansas

For more information on happenings around Northwestern, visit www.riderangersride.com, follow us on twitter at [@NWOSUAthletics](https://twitter.com/NWOSUAthletics) or visit our Facebook page.



FARM LAND | RANCH LAND | RECREATIONAL LAND | COUNTRY HOMES



SCAN ME



GREAT PLAINS

LAND CO

| AUCTION | SEALED BID | TRADITIONAL LISTINGS |

KY PFLEIDER
(580) 430-7005
KY@GREATPLAINS.LAND



LAND PROFESSIONAL
Licensed In: KS, OK

GREAT LAND. GREAT PEOPLE. GREAT PLAINS LAND COMPANY.
WWW.GREATPLAINS LANDCOMPANY.COM

From Page 40 Tampa

Tampa Bay area, which has a population of more than 3.3 million people. The 11 Florida counties under mandatory evacuation orders are home to about 5.9 million people, according to population estimates from the U.S. Census Bureau.

Those who defy the orders are on their own, and first responders are not expected to risk their lives to rescue them at the height of the storm.

“You do not have to get on the interstate and go far away,” DeSantis told a news conference, assuring residents there would be enough gasoline to fuel their cars for the trip. “You can evacuate tens of miles. You do not have to evacuate hundreds of miles away.”

Milton is forecast to cross central Florida and to dump as much as 18 inches (46 centimeters) of rain while heading toward the Atlantic Ocean, according to the National Hurricane Center. That path would largely spare other states ravaged by Helene, which killed at least 230 people on its path from Florida to the Carolinas.

The arrival of back-to-back hurricanes that rapidly intensified into mighty storms comes as climate change exacerbates conditions that are allowing them to thrive in warming waters. Milton is the 13th named storm of the Atlantic hurricane season, which started June 1.

Tampa Bay has not been hit directly by a major hurricane since 1921, and authorities fear its luck is about to run out. Tampa Mayor Jane Castor issued increasingly dire warnings, noting that a 15-foot surge could swallow an entire house.

“So if you’re in it, basically that’s the coffin that you’re in,” she said.

There’s no good recent example of how bad it could be because even historic hurricanes such as Andrew, Harvey and Katrina did not actually directly hit a

major metropolitan area. They were all to the side, said University of Miami hurricane researcher Brian McNoldy.

“It’s hard to see places coming out of this very well. If it’s not the worst case ... even the next worst case is very bad,” McNoldy said.

Most of Florida’s west coast was under a hurricane or tropical storm warning as the system spun just off Mexico’s Yucatan peninsula, creeping toward shore and sucking energy from the Gulf of Mexico’s warm waters. Hurricane warnings were extended early Tuesday to parts of the state’s east coast.

In Riverview, south of Tampa, several drivers waiting in a long line for fuel Tuesday morning said they had no plans to evacuate.

“I think we’ll just hang, you know — tough it out,” said Martin Oakes, of nearby Apollo Beach. “We got shutters up. The house is all ready. So this is sort of the last piece of the puzzle.”

Ralph Douglas, who lives in neighboring Ruskin, said he, too, will stay put, in part because he worries about running out of gas trying to return after the storm or getting blocked by debris.

“Where I’m at right now, I don’t think I need to evacuate,” he said.

At the Tampa airport, John Fedor and his wife were trying to catch a cab to a storm shelter after missing multiple flights home to Philadelphia. They had hoped taking a Caribbean cruise would bring them closer, but tensions were rising after they spent nearly \$1,000 on unplanned transportation and hotel rooms due to travel delays. After a two-mile walk to the airport, Fedor’s suitcase cracked open and the wheels broke. They considered driving home or taking a train, but nothing worked out.

“We’re kind of like stranded here,” Fedor said.

President Joe Biden approved an

emergency declaration for Florida, and the White House announced Tuesday that he would postpone a trip to Germany and Angola to monitor the storm.

“This could be the worst storm to hit Florida in over a century,” Biden told reporters. “God willing it won’t be. But that’s what it’s looking like right now.”

The Federal Emergency Management Agency has almost 900 staff members in the region and has stocked two staging areas with 20 million meals and 40 million liters of water, the White House said.

Stragglers were a problem during Helene and Ian in 2022. Many residents said they evacuated during previous storms only to have major surges not materialize. But there was evidence Tuesday that people were heeding the warnings to get out before Milton arrives.

The Florida Highway Patrol reported heavy traffic northbound and eastbound on all roadways and said state troopers were escorting fuel tankers to assist with gasoline delivery.

About 150 miles (240 kilometers) south of Tampa, Fort Myers Beach was nearly a ghost town. Ian devastated the community two years ago with its 15-foot (4.5-meter) storm surge. Fourteen people died there. On Tuesday, the nearby Callosahatchee River was already choppy, slapping hard against the sea wall.

David Jalving and his family spent the morning putting away planters and outdoor furniture at his parents’ home, which sustained extensive damage from Ian. They moved back in only six months ago.

“It is getting old, and every year it seems that it is getting worse,” said Jalving, who hopes to convince his parents to move. He’s also considering leaving Florida himself.

“I can’t deal with another one,” he said. In southwest Florida, the streets in the seaside town of Punta Gorda were still filled with furniture, books, toys and even a few hot tubs destroyed by Helene. Scott Joiner, who described bull sharks swimming in the flooded streets during that storm, said the city has been trying to pick up the trash but didn’t have enough time before Milton.

“Water is a blessing to have, but it is very deadly,” he said.

NOW HIRING

Office Assistant at Kiowa, Kansas Location



Contact 580-431-2211 to apply.

Storage Space
5'x10'-10'x24'

(580) 327-2554

Roten Properties, LLC
Formerly
Town & Country Properties

VACANCIES ARE AVAILABLE

Residential Living
(Houses, Apartments)

(580) 327-2554

OCTOBER EVENTS

10/15 - Turn & Burn Barrel Race
10/19-20 - Kansas 4D Barrel Race
10/22- Turn & Burn Barrel Race
10/25 - OSU Extension - Healthy Holiday Dishes Lesson
10/25-27 - Forever 7 Jr Rodeo
10/28 - OSU Extension - Brush Management & Control Mtg.
10/29 - Turn & Burn Barrel Race



All Events Are Listed on our Facebook page

Alfalfa County FAIRGROUND EVENTS
CALL (580) 596-6594 TO SCHEDULE EVENTS



Summit Wealth Strategies

411 College Alva, OK
(580) 609-4880
Van Johnson, EA
Owner, Tax and Wealth Advisor

Financial Services

Additional Client Services:
Income Tax Preparation
Payroll Preparation
Bookkeeping

Securities offered through AmeriSec Investment Services®, Member FINRA, SIPC Investment advisory services offered through AmeriSec Advisory Services®, Insurance services offered through an AlvaMax affiliated insurance agency.

Cherokee Floral & Gifts

Welcome to Fall!
We've got fall mums & beautiful fresh and silk arrangements perfect for autumn!

We deliver to Cherokee, Alva, Burlington, Jet, Carmen, Kiowa, Helena & surrounding areas

Lynetta Cressler
580-596-2000
1311 S. Grand Ave. in Cherokee

Animals and Pets
Found

east of Alva, black dog. Call 580-327-7501 to describe & tell gender

Business Services
Hercules Tires

Get up to a \$70 prepaid Visa card on select Hercules passenger and SUV tires. Free road hazard protection that offers free replacement for any Hercules brand passenger and light truck tire for two years or the first 50% of tread life. Call us today to improve your ride. Garnett Oil Co. 580-327-2691

Bermuda Hay

Premium Bermuda Hay: 5x6 Bales - weigh roughly 1400 lbs. Sprayed and fertilized. \$90 a bale for 10-100 and \$80 a bale for 100+. \$100 a bale for onesies. 580-748-2222

Tree Trimming

45 foot and 42 foot bucket trucks at your service. Tree Trimming & Removal. Multiple Tree Discount. Call 580-732-1028 for free estimate

Employment
Help Wanted

Part-Time station help for mornings and afternoons. More hours over the summer. Pick-Up application at Garnett Oil Co. 580-327-2691

Part-time Pastor

Kiowa Community Congregational Church in Kiowa, KS, desires to fill the position of part-time pastor. We have an independent denomination, recently withdrawn from United Church

of Christ Organization. If interested, please contact Janice Hill (msjkhill@aol.com).

Farm Supplies
Straw for Sale

Small bales, 2-wire, delivered or come get it. Mick of Kiowa 580-829-3090

Garage Sales
Garage Sale

Clothes, shoes, kitchenware, home decor. 803 3rd St., Alva (behind house). Fri 5-7pm. Sat 8am-noon

Youth Garage Sale

Sat, 8am-noon. 218 Maple St., Alva. Large shed in alley. Large sale, many Christmas items, kitchen, clothing, furniture, bikes, household & misc, books, much more

Trailer Sale

1208 Fair St., Alva. Wed 9am-3pm. Misc stuff

Estate Sale

312 S Broadway, Goltry, OK. Thurs-Sat till end of October. 9am-4pm. New items daily.

Yard Sale

3 N College Ave, Alva. 8am-10am. Sat, Oct 12

Marvelous Antiques

and Bob Crap Flea Market is having a box sale from \$3-\$10 (garage only), Fri & Sat 10am-5pm and Sun 1-5pm. Another sale in carport with very nice clothes (small & medium) some still w/ tags. At the Great Salt Plains lake on Hwy 38 - Main St. Nescatunga

Miscellaneous
Donate Clean Clothing

DEAN GOLL
Real Estate & Auction, LLC
CALL US FOR YOUR REAL ESTATE NEEDS!

Land is in very high demand right now.

WE HAVE THE BUYERS!

Give us a call so we can market your property!

Dean 580-327-7246
Todd 580-747-7825 • Steve 580-445-5145
806 Oklahoma Blvd. • Alva, OK 73717
• www.deangollauction.com • DG
DG + OFFICE: 580-327-8217 + DG
Licensed in Oklahoma and Kansas

Protect Grass + Alfalfa Acres Against Lack of Rainfall in 2025!

PASTURE, RANGELAND & FORAGE (PRF) Deadline: December 2nd

Quotes include Rainfall Amt's Guaranteed + 20 years of Payout History for your area/GRID.

CALL: 1-800-299-2408




ALVA BAIL BONDS LLC


SHANE VORE
580-430-7098



In Business For Your Health Since 1952

HOLDER DRUG

580-327-3332
1-800-458-5349
513 BARNES
ALVA, OKLA.



Baby Registries



- SIERA & SEAN DOHERTY
- GRACELYN & ELIJAH SMITH
- NIKKOLE & MATTHEW BICKFORD
- BRODIE & ALLYSON BUSH
- SCHYLER & ALEXIS OYLER
- NATALIE BERRYHILL & JACOB FAULKNER

BRIDAL REGISTRIES

- KATHRYN BAUGH & CODY MOORE
- RENAE ACKER & JED SMITH
- CHLOE LEHR & BRICKMAN BRADT
- CATHY MAPES & JP KING
- GRACIE SCARBROUGH & JONAS DECKER
- SIERRA DAVIDSON & JAKE DAILEY

ALVA STATE BANK & TRUST COMPANY

Specialists in Agriculture Lending

We've Served You 100 Years!



Residential/Commercial New Construction

Additions - Remodels
Sidewalks - Excavating
Seamless Gutters
Bucket Truck Service



A-Z CONSTRUCTION AND REMODEL LLC

Mark Reed - 580.732.1028
932 Flynn Street., Alva, Oklahoma 73717

NO BETTER DEAL IN THE COUNTRY THAN AT

Croft COUNTRY



1-800-475-8033

MON-FRI 8AM-6PM
SAT 9AM-12PM

401 E. OKLA BLVD
ALVA, OK 73717

Annual Warmth for Winter clothing & blanket collection in progress at College Hill Church of Christ, Alva. Help those who don't have enough funds by donating your gently used (no repairs needed) clothes for all ages. Warm adult and children's clothing and blankets needed. Leave behind church building, 1102 College, in storage trailer. Thanks! Call 580-327-0130 with questions. Giveaway Nov. 23

Family History Writing

Northwest Oklahoma Genealogy Society is hosting Dr. Molly Barari this Saturday,

October 12, 2024, at 10 a.m. at the Alva Public Library to conduct a workshop on family history writing. The public is invited to attend

Real Estate

For Rent

2bdrm mobile home. Pens avail. 7 miles outside Alva. 580-748-0901

4 Sale

Carmen, OK \$53,000 or rent \$600. Dacoma, OK \$130,000 or rent \$900. Sofa \$100. Free fridge. 580-430-1993 leave message



For All Your Heating & Cooling Needs

580-596-3333

104 N. Grand
Cherokee, Okla
73728

GORDEN & ANDERSON

WORK GUARANTEED

SEAMLESS GUTTERING, LLC

5" & 6" Leaf Guards • Ice Stops
Siding • Soffit Fascia • Doors
Windows • Awnings

FULLY-INSURED
Free Estimates
References Available

David "Flash" Gorden 316-293-7014
Michael Gorden 316-285-7301

Small Engine Repair & Service
Call Flash!
Located in Hardtner, KS
flashg1058@gmail.com

Alfalfa County Sheriff's Office Logs

Tuesday, October 1, 2024
During this day: one traffic stop.

1:37 a.m. – Alarm company advised of an alarm going off on County Road 740. Keyholder was out of town and advised no one should be out there. Deputy went to the property and found no entry or tracks. All was okay.

1:02 p.m. – Welfare check needed for someone walking west on OK-11.

5:23 p.m. – Welfare check needed on 100 block of Corn for a neighbor having trouble with their child. Deputy spoke with the mother and child, and all is okay.

5:53 p.m. – Caller advised they hit an electric pole and knocked it over and it started a fire. Carmen Fire Department advised and en route.

8:39 p.m. – Medic needed

in the 200 block of Texas for a 33-year-old female who was in labor. Medic took the patient to Bass Hospital in Enid.

9:24 p.m. – Reporting party advised her grandson was getting threatening text messages from an ex-friend. Advised officer.

Wednesday, October 2, 2024
During this day: five traffic stops.


12:45 p.m. – Medic needed for a 66-year-old female with abdominal pain. Medic took the patient to St. Mary's Hospital in Enid.

1:16 p.m. – Medic needed at James Crabtree Correctional Center for a 62-year-old male with hypertension and possible stroke. Medic took the patient to Bass Hospital in Enid.


1:30 p.m. – Caller requested to make a report. Advised their neighbors cut down a tree and

Baby Registry


Wren & Chase Wallace



Bridal Registry



Madeline Long & Austin Rankin
Chloe Lehr & Brickman Bradt
Cathy Mapes & JP King



Schuhmacher's
COPPER PENNY

405 COLLEGE AVE. ALVA, OKLAHOMA 580-327-0777 MON-FRI 10-5:30 & SAT 10-4

See Sheriff Page 45

526 FLYNN STREET ALVA, OK 580-327-3500

McDermott Insurance ALL YOUR INSURANCE NEEDS UNDER ONE ROOF
STOP BY OR GIVE US A CALL TODAY!

"Say It With Flowers"

Call for your gorgeous Fall floral arrangement!

Fresh Arrangements, Candles, Balloons, & Houseplants For All Occasions

Dorothy's Flowers & Gifts
Scott Nelson & Barbara Nelson



706 Logan Street Alva, OK 73717
Bus: 580-327-2114
Cell: 580-430-5111
Cell: 580-430-5300

HOME & OFFICE DELIVERY

580-626-4420

RENT-A-DISPENSER



CALL TODAY TO GET STARTED

B&B ROOFING

Family-Owned and Operated!
Call Crystal or Juan today!

All Types of Roofing
Vinyl Siding • Painting
General Contracting
Cement • Additions
Remodeling • Siding
Windows • Gutters • Concrete

(580) 542-0287

From Page 44 **Sheriff**

damaged their fence.
2:56 p.m. – Report of a milo field on fire at Garvin and County Road 570.

Thursday, October 3, 2024

During this day: three traffic stops.

7:34 a.m. – Medic needed in the 400 block of Corn for a 77-year-old male with a serious nosebleed. Medic took to patient to Bass Hospital in Enid.

12:41 p.m. – Medic needed in the 700 block of Grand for an 87-year-old male with high blood pressure. Medic took the patient to Bass Hospital in Enid.

5:50 p.m. – Caller requested to talk to an officer about a previous scam that a man assisted her with, but now the helper will not leave her alone. Officer advised.

5:57 p.m. – Reporting party advised of a male who made a “gun” sign with their fingers and made a threatening gesture at her. Info was taken. Officers were busy with another call and advised they will let the officer know and if it happens again, to call back.

12:31 p.m. – Caller advised his neighbors are throwing rocks at the side of his house in the 100 block of 6th Street and he want to report it. Officer advised.

Friday, October 4, 2024

During this day: one controlled burn.

4:33 p.m. – Report of a reckless driver in a gray Nissan Titan on OK-8. Advised they drove down the wrong way, down one of the turning lanes at the four-way, and later drove through a stop sign in Cherokee

and was driving at high rates of speed and almost hit another vehicle turning at the four-way. Deputy unable to locate the vehicle.

7:19 p.m. – Medic needed for a 57-year-old male who was unresponsive but breathing. Medic took the patient to Bass Hospital in Enid.

Saturday, October 5, 2024

8:25 a.m. – Officer advised of a drug drop at James Crabtree Correctional Center and to be on the lookout for a black Nissan with one female and one male inside. Advised Woods County and OHP.

Sunday, October 6, 2024

During this day: one traffic stop.

2:11 a.m. – Caller advised she heard a woman screaming at the house to the left of her in the 700 block of Pennsylvania. Officer drove around the neighborhood and reported not hearing anything.

4:10 a.m. – Reporting party advised her ex-husband was at her house beating out the windows and trying to break in. Advised she does have a friend with her. At 4:16 a.m. the reporting party called back stating the ex-husband must have taken off. At 4:25 a.m. the reporting party called back and stated that the ex-husband showed back up and has busted out her bedroom window. Dispatch could hear him yelling in the background. Deputy arrived and advised the ex had left again but he will stay at the location to get the report. Deputy advised he was looking for the ex in Carmen. Deputy was unable to locate the ex at the

HERE FOR YOUR...

- Siding
- Metal or Shingle Roofing
- Small Carpentry Repairs

BT ROOFING, LLC

Licensed in Oklahoma

Contact

Charles 580-327-7019	Bernice 580-732-0978
-------------------------	-------------------------

129 CHURCH ST. | ALVA, OK 73717

Kiowa Locker Chieftain Meats



Fresh, high-quality meat

All slaughter is
USDA inspected

Locally raised & fed beef

620-825-4538

611 Main Street in Kiowa

All major credit cards and EBT accepted

Banc Central

Our Family Proudly Serving Your Family For Over 100 years!

604 Flynn St.
Alva

580-327-1122

Member FDIC

See Sheriff Page 46

Community Calendar

Wednesday

9 a.m. The Woods County Senior Citizens Center, 625 Barnes, Alva, has in person dining and delivery for homebound seniors. Please call 327-1822 until noon the day before to order.

1-5 p.m. The Cherokee Strip Museum in Alva is open every day except Monday.

7 p.m. Alva Moose Lodge men's meeting is held every Wednesday.

Thursday

9 a.m. The Woods County Senior Citizens Center, 625 Barnes, Alva, has in person dining and delivery for homebound seniors. Please call 327-1822 until noon the day before to order.

1-5 p.m. The Cherokee Strip Museum in Alva is open every day except Monday.

3-6 p.m. Food distribution is every Thursday, Alva Wesleyan Food Bank, 818 Lane St.

7 p.m. Alcoholics Anonymous open meeting is at 623 5th St. (Youth Corr House), Alva on Thursdays.

Friday

1-5 p.m. The Cherokee Strip Museum in Alva is open every day except Monday.

MURROW
 REAL ESTATE & AUCTION, LLC.
580-327-1998
 www.murrowrealestateandauktion.com

Proud to be locally owned



Hardtner Guest Lodge & RV Park
 Reasonable rates!
 104 N. Cherokee in Hardtner, KS
Wi-Fi & Dish available
Call 620-213-0903

Do you have old Savings Bonds?
 Check out the Savings Bond Calculator at www.savingsbonds.gov to discover their value. **1-800-4US BOND**



A public service of this newspaper

From Page 45 Sheriff

time.

5:52 a.m. – Medic needed in the 300 block of 6th Street for a male suffering from severe pain and hasn't slept in almost two weeks, had fallen, and hit his face and is not alert. Medic took the patient to St. Mary's Hospital in Enid.

7:52 a.m. – Medic needed at James Crabtree Correctional Center for 41-year-old male with chest pains. Medic took the patient to Bass Hospital in Enid.

4:03 p.m. – Report of a juvenile who pounded on the caller's door and then ran off in the 1300 block of Oklahoma.

Alfalfa County real estate transactions

Real Estate Transfers

Book 902, page 124: Maxine A. Cunningham and Myron K. Cunningham convey unto Maxine A. Cunningham and Myron K. Cunningham, trustees. The southeast quarter and the east 60 acres of the northwest quarter of Section 35, Township 28N, Range 11, WIM, The west half of Section 36, Township 28N, Range 11, WIM. Warranty deed.

Book 902, page 182: Curtis W. Bussard and Brandi Bussard convey unto O'Neil Metcalf and Erin Metcalf. The east 316 feet of Tract 3, Bradley's Suburban Addition to the City of Cherokee, Section 11, Township 26N, Range 11, WIM, Alfalfa County, Oklahoma. Joint tenancy warranty deed.

Book 902, page 200: Stephen D. Tarrant as trustee of the D. Tarrant Management Trust, to Richard Catle, trustee of the Richard Castle Revocable Trust. Undivided one-half interest in the west. Half of the northeast quarter of Section 24, Township 25N, Range 10, WIM. Quit claim deed.

Book 902, page 216: Diana Mitchell conveys unto Jo P. Grimm and Laurie D. Gwinn. Lot 28 and south 70 feet of lots 29 through 32, Block 26, Original Town Addition of 00221 E. 3rd St., Helena, Oklahoma. Quit claim deed.

Book 902, page 222: Nescatunga Rural Fire Association conveys unto Board of County Commissioners, Alfalfa

County, Oklahoma. A tract of land in the southwest quarter of the southeast quarter of Section 3, Township 26N, Range 9, WIM, etc. Quit claim deed.

Book 902, page 252: Chad Hester and Janet Hester convey unto Jamie Goodwin. A tract, piece or parcel of land out of Lot 2, in Block 3, Southgate Addition to the City of Cherokee, Alfalfa County, Oklahoma. Quit claim deed.

Mortgages

Book 902, page 158: The Farmers Cooperative Association of Alva, Oklahoma, to Bank of Western Oklahoma. Surface only: a tract of land at Ashley, Alfalfa County, Oklahoma, etc. Note: \$2,000,757.15.

Book 902, page 170: The Farmers Cooperative Association of Alva, Oklahoma, to Bank of Western Oklahoma. Surface only: a tract of land at Ashley, Alfalfa County, Oklahoma, etc. Note: \$1,033,421.42.

Book 902, page 186: O'Neil Metcalf and Erin Metcalf to ACB Bank. The east 316 feet of Tract 3, Bradley's Suburban Addition to the City of Cherokee, Section 11, Township 26N, Range 11, WIM, Alfalfa County, Oklahoma. Note: \$328,000.00.

Book 902, page 238: Darrin D. Lancaster and Katie D. Lancaster to ACB Bank. A tract of land beginning at the northwest quarter of Section 32, Township 26N, Range 10, WIM, Alfalfa County, Oklahoma. Note: \$55,000.00.

Honor your loved one's memory in a meaningful way.

Give a gift of Hope.

1.800.ACS-2345

www.cancer.org

Available 24 hours a day, seven days a week.



Oklahoma amends request for Bibles that initially appeared to match only version backed by Trump

By Ken Miller

OKLAHOMA CITY (AP) — Oklahoma has amended its request for 55,000 Bibles to be placed in public schools that initially matched a version of the holy book endorsed by former President Donald Trump.

The request was amended Monday and no longer requires the Bibles to include U.S. historical documents such as the Declaration of Independence and the Constitution — requirements that match the “God Bless the USA Bible” that Trump endorsed this year and that are several times more expensive than similar Bibles that don’t include the U.S. documents.

The new request says the historical documents may be included together or separately and extends the deadline for offers to supply the items by one week, from Oct. 14 to Oct. 21.

The request is part of State Superintendent Ryan Walters’ efforts to require Bibles in public school classrooms, which has been met with resistance by some of Oklahoma’s largest school districts.

Walters, in a Monday video on X, said the Bible will be used “because of its historical significance throughout this nation’s history,” blaming what he called the “fake news media” for lies about the program.

“The left-wing media hates Donald Trump so much, and they hate the Bible so much, they will lie and go to any means necessary to stop this initiative

from happening,” Walters said.

Walters’ spokesperson, Dan Issett, said in a statement that the changes to the “request for proposal,” or RFP, were suggested by the Office of Management and Enterprise Services, which issues the requests and were agreed to by Walters.

“Unfortunately, there have been false reports that have been repeated by numerous, supposedly credible, news organizations that the state’s RFP was catered to one specific organization,” Issett said, noting that tailoring the request so that only one manufacturer’s Bible would qualify would be illegal.

Christa Helfrey, a spokesperson for OMES, said the changes were made to the request to try to save taxpayer money.

“OMES worked with OSDE to amend the solicitation to provide the listed resources at a much better value to Oklahomans,” Helfrey said.

The initial request included requirements that are not commonly found in Bibles but are included in the “God Bless the USA Bible,” which Trump urged his supporters to begin buying earlier this year at a website that sells the book for \$59.99.

The Bibles must be bound in “leather or leather-like material for durability,” according to the initial request.

Similar Bibles that don’t include the Declaration of Independence or Constitution are available online for less than \$20.

Alfalfa County court filings

According to the affidavits and petitions on file, the following individuals have been charged. An individual is innocent of any charges listed below until proven guilty in a court of law. All information is a matter of public record and may be obtained by anyone during regular hours at the Alfalfa County Courthouse. The Newsgram will not intentionally alter or delete any of this information. If it appears in the courthouse public records, it will appear in this newspaper.

Felony Filings

Jared Dustin Peffly, Cherokee, 21, has been charged with assault with a dangerous weapon (\$571.50).

Misdemeanor Filings

Lukas A. Landrum, Cherokee, 18, has been charged with threatening to perform act of violence (\$351.50).

Jared Dustin Peffly, Cherokee, 21, has been charged with reckless driving (\$276.50).

Civil Filings

Midland Credit Management Inc. vs. Mike Jones, Helena: indebtedness (\$239.14).

Traffic Citations

Timothy Ross Conway, Cherokee, has been cited for failure to comply with compulsory insurance law (\$269).

Timothy Ross Conway, Cherokee, has been cited for operating a vehicle on which all taxes due to stat have not been paid (\$294).

Coleby Shane Zirkel, Enid, has been cited for speeding 15 mph over the speed limit (\$264).

Need an ad? Call us at

580-327-2200

or email:

sales@alvareviewcourier.net

stacy@alvareviewcourier.net



STANDARD RATE
POSTAGE PAID
PERMIT #28
ALVA, OK

Increase Your Earnings



COREBANK

Increase Your Earnings

12-Month CD

4.95% APY*



COREBANK

Increase Your Earnings

18-Month CD

4.00% APY*



COREBANK

Increase Your Earnings

30-Month CD

3.75% APY*

corebankok.com

1522 Missouri St., Waynoka

(580) 824-5451, Option 1

*Annual Percentage Yield for 12 months. Loss of 180 days interest for early withdrawal with a minimum deposit of \$10,000.
No brokered deposits. Effective 4/12/24

**Member
FDIC**